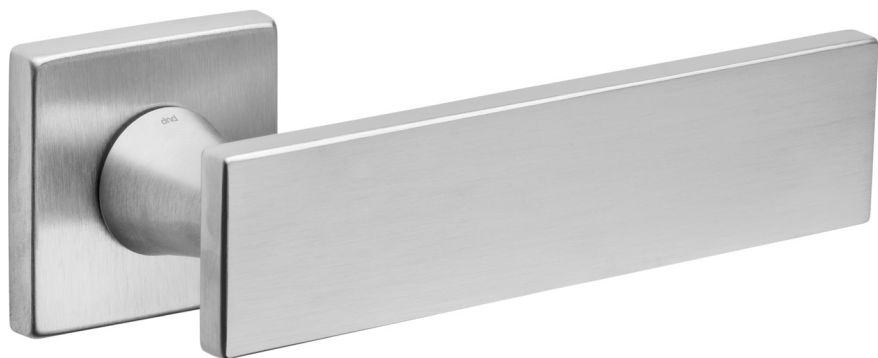


aretè L 02

design:  
**Mauro Ronchi**

made in italy



**AL14**  
PCS

Ottone forgiato  
*Forged brass*



**AB**  
Bronzato  
*Antique bronze*



**OGH**  
Bronzo satinato opaco  
*Matt satin bronze*



**OC**  
Power cromo lucido  
*Power polished chrome*



**PCS**  
Power cromo satinato  
*Power satin chrome*



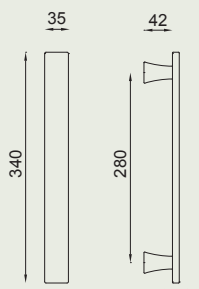
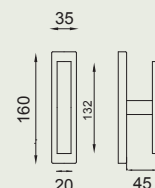
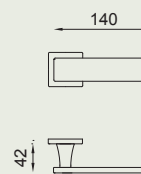
**PGS**  
PVD grafite satinato  
*Satin graphite PVD*



**PVX**  
PVD inox  
*Steel PVD*



**PVD-SG**  
PVD oro antico satinato  
*Antique satin gold PVD*  
**new**



**VIS** AL14

AL25

ED26C

AL27 \*

**FINE** AL41

**VIS** AL25V

ED26M

**52** AL18

**52** AL25TS

\* Altre misure disponibili  
su richiesta.  
*Other lengths available  
on request.*