

intake



Disegnata per il Museo Casa Enzo Ferrari di Modena, solida nella materia e plastica nella forma, è un omaggio al car design più attento.

Designed for the Enzo Ferrari Museum in Modena, solid in terms of material, sculptural in terms of form, in a tribute to the finest automotive design.

intake

design:
Andrea Morgante

made in italy

Ottone stampato a caldo
Hot stamped brass



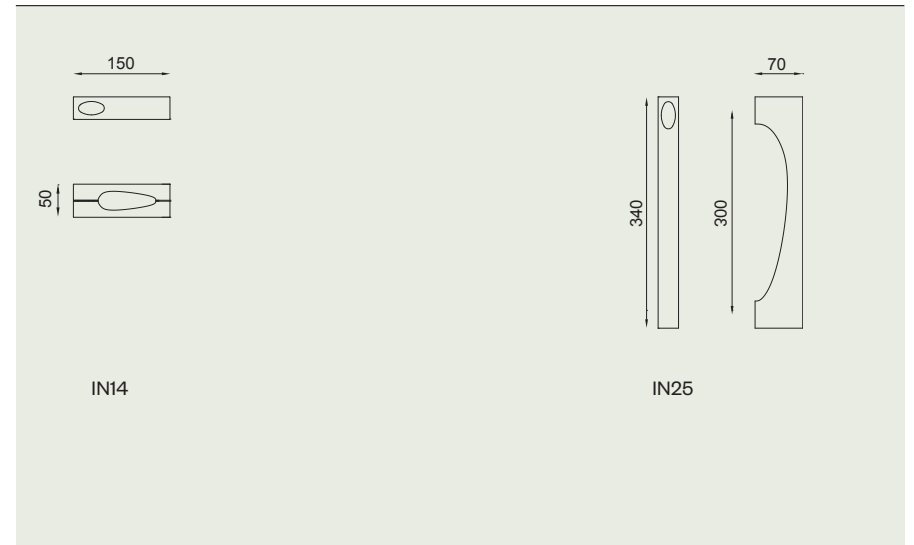
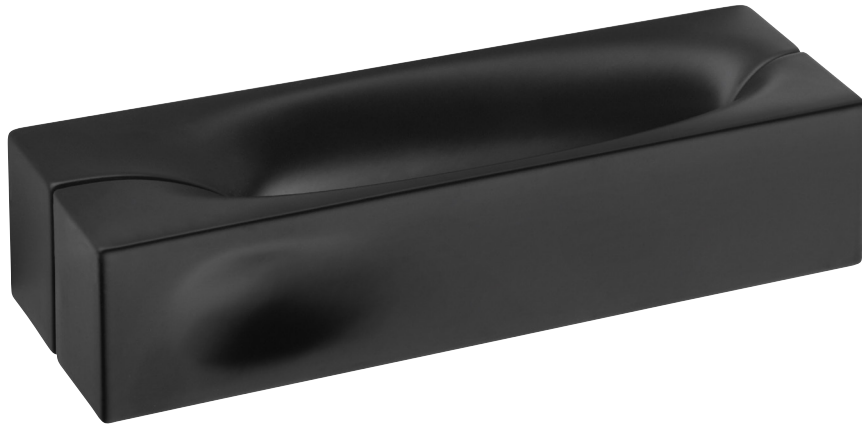
OC
Power cromo lucido
Power polished chrome



OBN
Bianco
White



ONO
Nero
Black



IN14
ONO

118-

dnd2020

119