

# Marco Pisati



Designer fiorentino, architetto di formazione, è affascinato dai nuovi materiali e dalle nuove tecnologie. Sperimenta le sue idee nei settori più diversi, progettando per diverse aziende: ASI, Emilio Pucci, Antonio Lupi, Cordivari, Treemme Rubinetterie, Glass Design, Gattoni Rubinetterie, K8.

*A designer from Florence, trained as an architect, fascinated by new materials and technologies. He experiments with ideas in a wide range of sectors, designing for different companies: ASI, Emilio Pucci, Antonio Lupi, Cordivari, Treemme Rubinetterie, Glass Design, Gattoni Rubinetterie, K8.*



1.

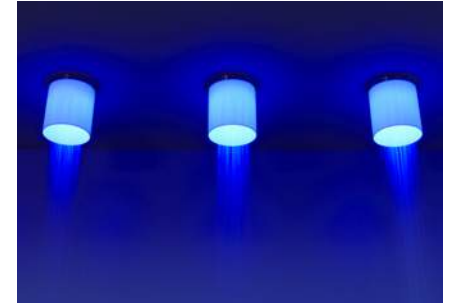


2.

1. 2. Decò, Kerasan (2016) – 3. 4. Iride, Antonio Lupi (2017) – 5. Ran, Treemme (2015) – 6. Lumen, Antonio Lupi (2018)  
7. Lynea, Cordivari (2017)



3.



4.



5.



6.



7.

# timeless

**design:**  
**Marco Pisati**

Due segni grafici essenziali, una linea e un cerchio che si intersecano in maniera centrale e simmetrica.

Timeless è disponibile in cinque finiture: silver, oro satinato, bronzo, bianco, nero.

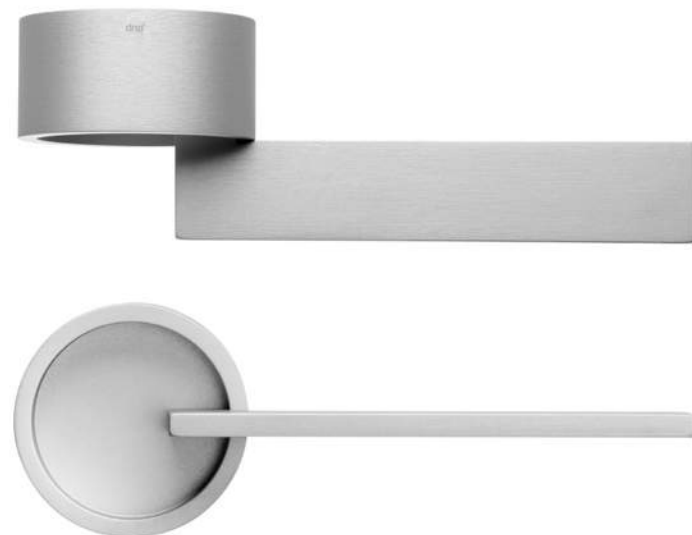
*Two essential graphic signs, a line and a circle that intersect in a central and symmetrical way.*

*Timeless is available in five different finishes: silver, satin gold, bronze, white, black.*



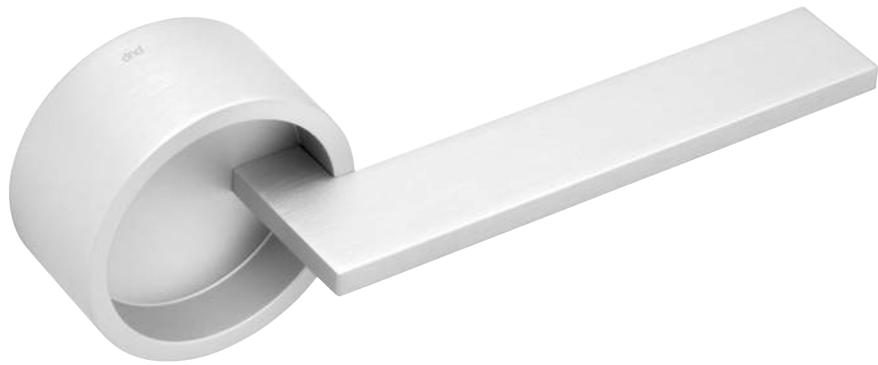
timeless

design:  
Marco Pisati



timeless

design:  
Marco Pisati



TL01  
ASV

038-

dnd design focus 2019

Alluminio  
Aluminium



ASV  
Silver  
Silver



ARO  
Oro satinato  
Satin gold



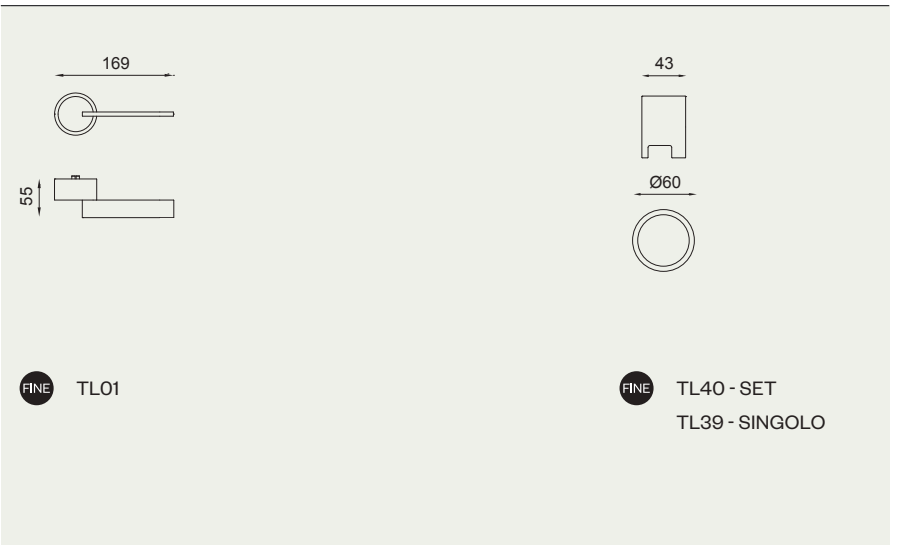
ABR  
Bronzo  
Bronze



ABN  
Bianco  
White



ANE  
Nero  
Black



039