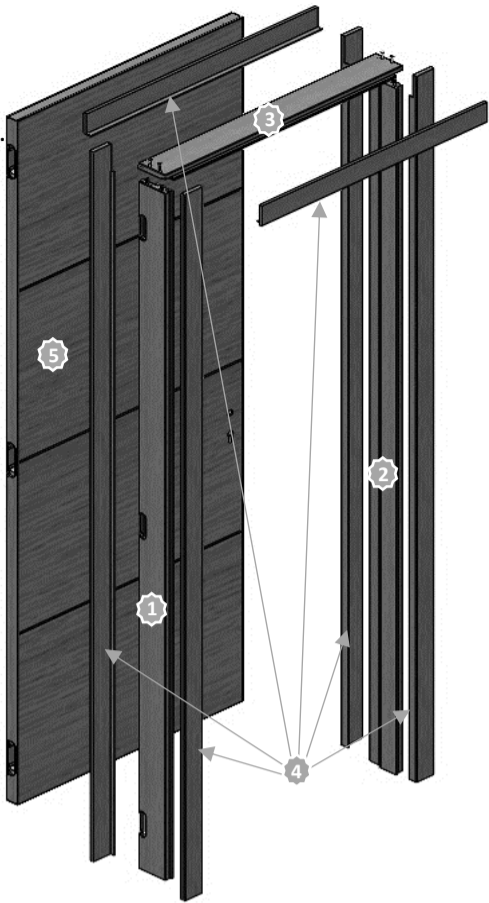


Installation Instructions for DOOR SETS with REVERSIBLE Frame



These products are fragile and must be stored in a dry and ventilated room. Do not unpack the products before implementation, they fear knocks and scratches. Store them away from interior work areas (plaster, coatings, tiles, flooring, etc.). Check the reservation dimensions in the partitions. Coat the frame feet with silicone to protect them from rising damp when cleaning the floor with water.



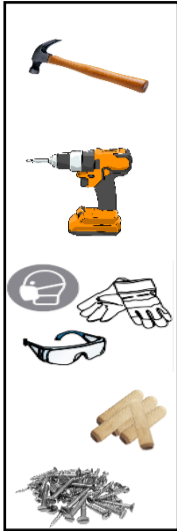
BOM

- 1 HINGES JAMB
- 2 LOCK JAMB
- 3 HEAD JAMB
- 4 ARCHITRAVES
- 5 DOOR PANEL

Hardware



Tools

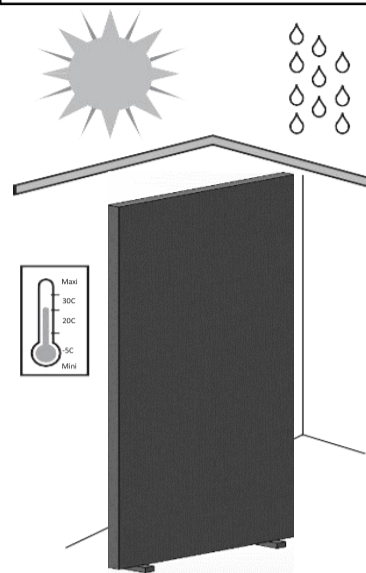


Storage



IMPORTANT!

Interior joinery must be stored in its original packaging inside a dry and ventilated room, protected from water, humidity, light and blows. They should never lay directly on the bare ground and be placed vertically or horizontally flat.

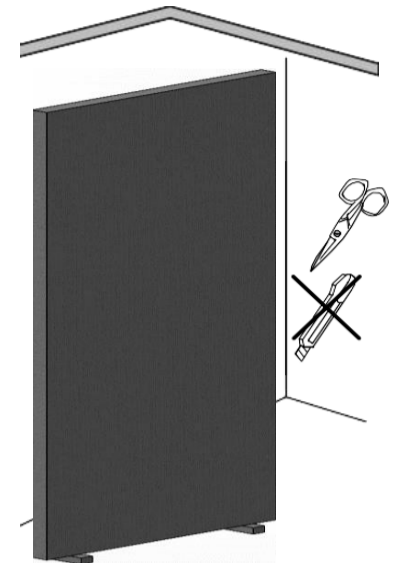


Preparation



IMPORTANT!

Carefully unpack the door set. Do not use cutter



Composition of the door set

- 1 panel carries direction by right-hand inswing (RHI) or left-hand inswing (LHI).
- 1 reversible frame with extendable architraves to be fitted according to the thickness of the partition/wall between 110 and 120mm.
- sound seal fitted into the frame.
- 3 concealed OTLAV invisacta IN300 and 1 B-Smart Lock 22x190.
- 2 spreader bars for adjusting the frame during wall mounting.
- The accessories

1

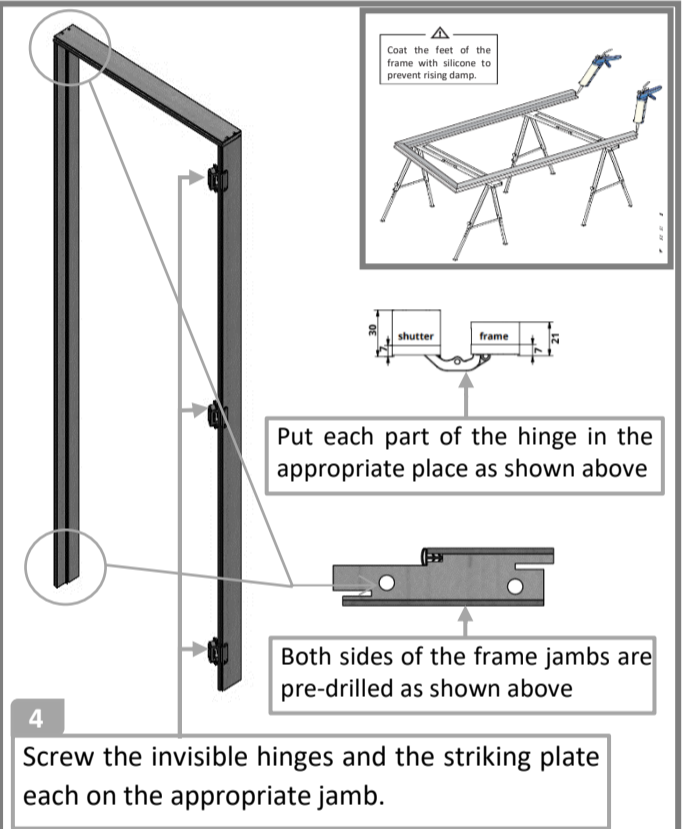
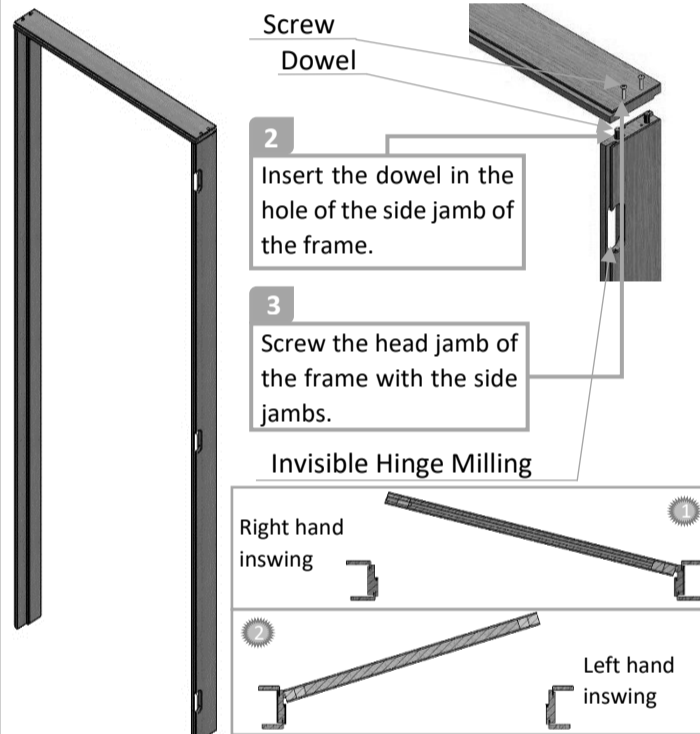
Check the Dimensions of reservations.

PANEL HEIGHT H.C	FRAME HEIGHT H.B	STRUCTURAL OPENING H.A
2026mm (79 7/8")	2057mm (81")	2067mm (81 3/8")
2432mm (95 7/8")	2463mm (97")	2473mm (97 23/64")

PANEL WIDTH W.C	FRAME WIDTH W.B	STRUCTURAL OPENING W.A
908mm (35 3/4")	956mm (37 41/64")	976mm (38 27/64")
806mm (31 47/64")	854mm (33 3/8")	874mm (34 13/32")
756mm (29 49/64")	804mm (31 21/32")	824mm (32 7/16")
706mm (27 21/64")	754mm (29 11/16")	774mm (30 15/32")

Define the opening direction wanted.

- If right-hand inswing, follow the position as shown below 1
- If left-hand inswing, switch the position of hinge and lock jambs 2

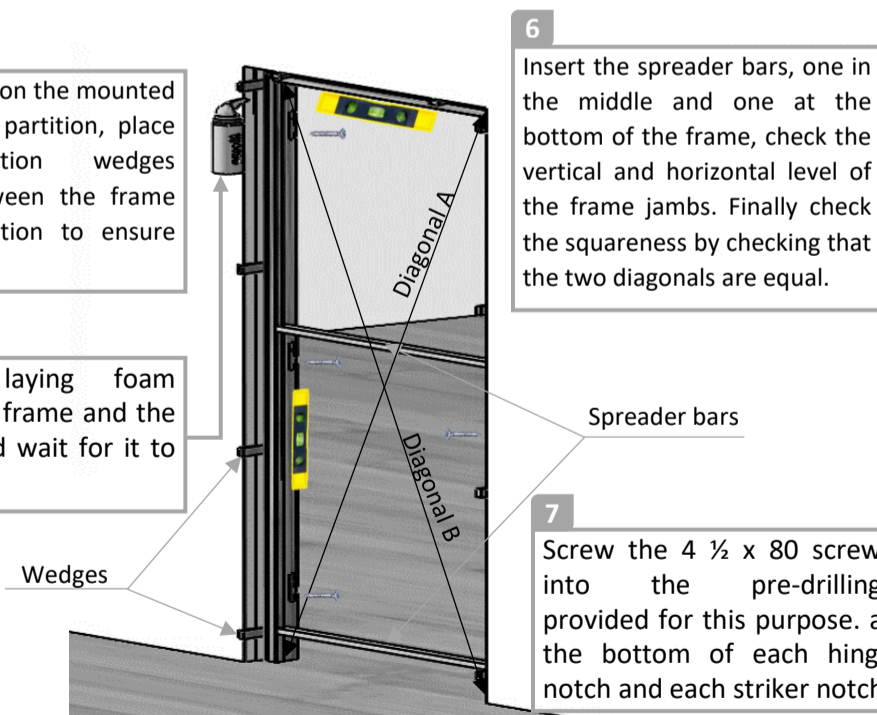


5

Carefully position the mounted frame on the partition, place the installation wedges (corners) between the frame and the partition to ensure fixing stability.

8

Use the laying foam between the frame and the partition, and wait for it to dry.



6

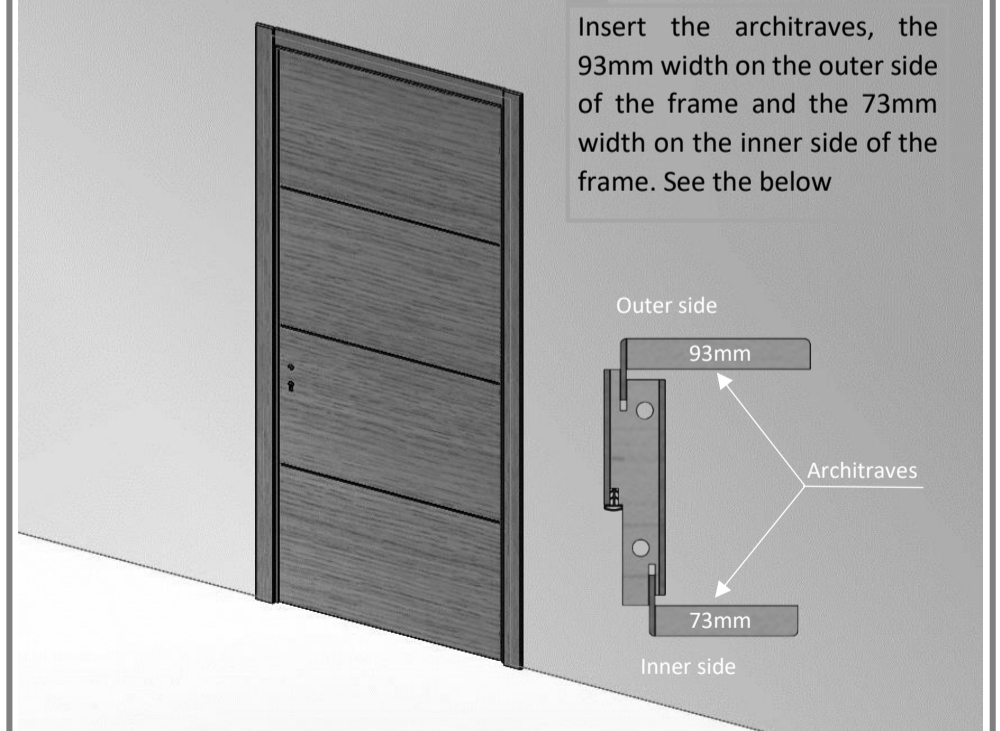
Insert the spreader bars, one in the middle and one at the bottom of the frame, check the vertical and horizontal level of the frame jambs. Finally check the squareness by checking that the two diagonals are equal.

7

Screw the 4 1/2 x 80 screws into the pre-drillings provided for this purpose. at the bottom of each hinge notch and each striker notch.

9

Insert the architraves, the 93mm width on the outer side of the frame and the 73mm width on the inner side of the frame. See the below



Use the level, make sure that the frame is plumb (check the 2 vertical jambs and the head jamb on the side/passage and the flats)

- After all the adjustments have been made and the levels have been checked, screw the 4 1/2 x 80 screws into the pre-drillings provided for this purpose, at the bottom of each hinge notch and each striker notch.
- Check that the screws effectively hold the frame in the partition, then use a polyurethane spray, apply the foam as indicated in step 7. Do not overfill the gap between the frame and the partition because the applied foam can expand up to 150%. Choose low expansion foam.
- Let the foam dry, the drying time is indicated by the manufacturer on the container.
- Once dry, carefully remove the excess foam overflowing from the frame/partition junction.
- Properly hang the door on the frame, making sure that the hinges can reach properly.
- Insert the architraves in the appropriate place.

To change the opening direction, follow the instructions below:

- Flip the lateral frame jambs upside down.
- Switch the right and the left frame jambs.
- Leave the frame head jamb as it is.
- Rotate the door panel vertically.
- Follow the assembly instruction above from the start.

