

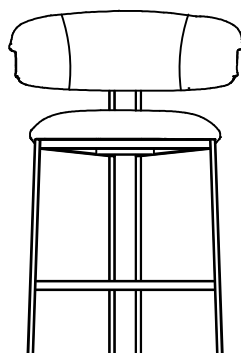
## KYO STOOL



design by Giuliano e Gabriele Cappelletti

## KYO STOOL

design by Giuliano e Gabriele Cappelletti

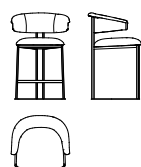


*Sgabello dalle forme curve e avvolgenti con struttura in metallo a forma di ferro di cavallo. La seduta e lo schienale hanno una struttura in legno imbottita in poliuretano espanso, rivestito in velluto o in pelle.*

Stool with curved and embracing shapes and horseshoe-shaped metal base. The seat and the backrest have a wooden frame padded with expanded polyurethane foam and upholstered with velvet or leather.

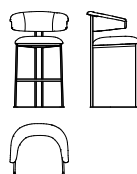
### SADA02

	W	D	H
cm	61	57	92
in	24	22	36

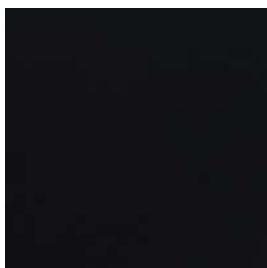


### SADA03

	W	D	H
cm	61	57	102
in	24	22	40



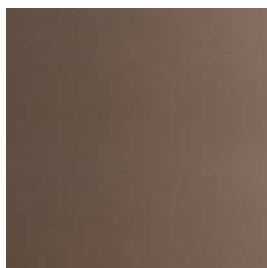
## FINITURE METALLO · METAL FINISHES



*Metallo Verniciato Nero*

Black Varnished Metal

Cod. MV



*Metallo Verniciato Bronzo*

Bronze Varnished Metal

Cod. MV

## VELLUTO · VELVET

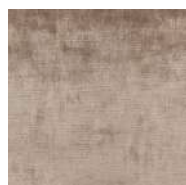
*Velluto Vegas · Vegas Velvet*



04



06



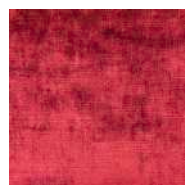
12



74



03



36



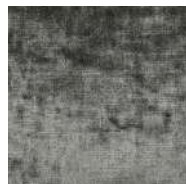
231



233



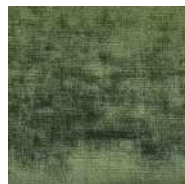
236



241



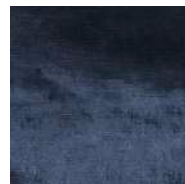
67



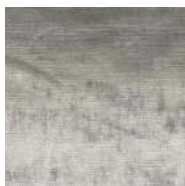
68



35



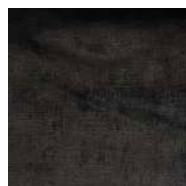
51



76



60



49

**PELLE · LEATHER***Pelle Brezza · Brezza Leather*

617 Ottico



661 Bianco



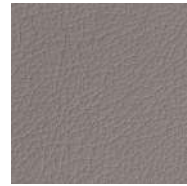
695 Panna



679 Lino



634 Oasi



603 Tortora



627 Camoscio



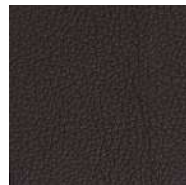
638 Bracco



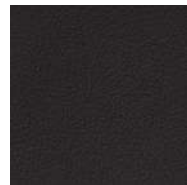
605 Fango



628 Marmotta



602 Moro



678 Caffè



621 Avana



692 Fresia



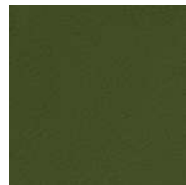
618 Mango



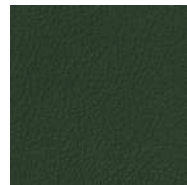
619 Pompelmo



672 Cedro



691 Oliva



626 Papiro



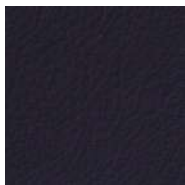
671 Ghiaccio



609 Prussia



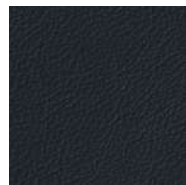
668 Notte



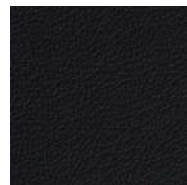
615 Viola



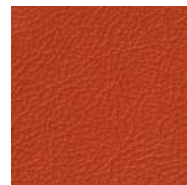
622 Beola



623 Oceano



601 Nero



684 Carota



613 Scarlatto



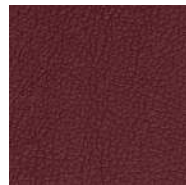
624 Porpora



614 Azalea



642 Lillà



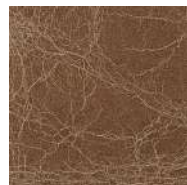
610 Melograno

*Pelle Retrò · Retrò Leather*

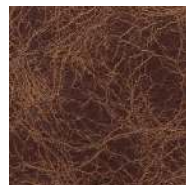
C/0313



C/0305



C/0300



C/0301



C/0302



C/0311



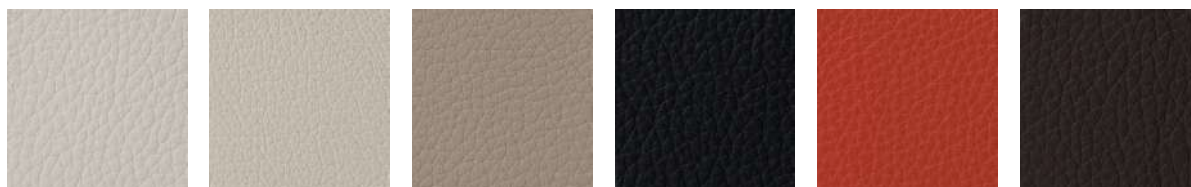
C/0303



C/0304



C/0312

**PELLE · LEATHER***Pelle Zefiro · Zefiro Leather*

55 Ottico

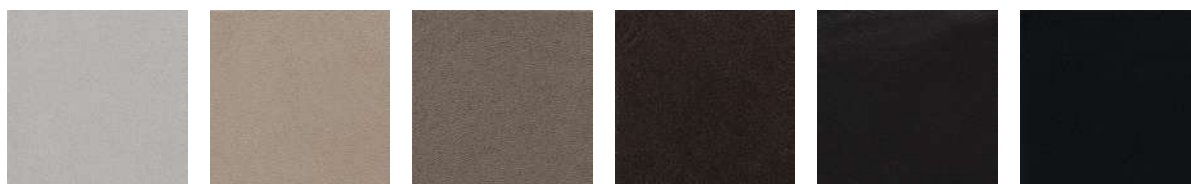
27 Neve

84 Oasi

25 Nero

37 Minio

23 Bruno

*Pelle Brevia · Brevia Leather*

4209 Perla

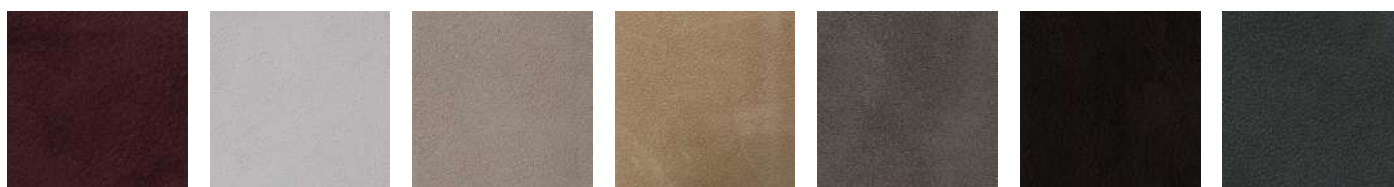
4207 Pomice

4205 Creta

4203 Seppia

4202 Bruno

4201 Nero

*Pelle Nabuck · Nabuck Leather*

C/3424

C/3402

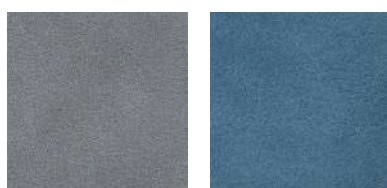
C/3405

C/3408

C/3416

C/3410

C/3401



C/3414

C/3431

## CURA E MANUTENZIONE DEL METALLO

*I metalli utilizzati per i nostri prodotti sono di altissima qualità. Le possibili differenze di tonalità o sfumature di colore sono da considerarsi caratteristiche dei materiali e dimostrazione dell'artigianalità di lavorazione.*  
*Per la pulizia quotidiana di parti in metallo, acciaio e ottone, si consiglia di utilizzare un panno morbido o in microfibra, inumidito con acqua o con detergenti appropriati.*  
*Non utilizzare prodotti abrasivi o aggressivi.*  
*Pulire le macchie quando sono ancora fresche.*

## CURA E MANUTENZIONE DELLA PELLE

*Le pelli utilizzate per i nostri prodotti sono di altissima qualità. Le possibili differenze di tonalità o sfumature di colore sono da considerarsi caratteristiche naturali dei materiali e dimostrazione dell'artigianalità di lavorazione.*  
*Per la pulizia quotidiana di superfici in pelle, si consiglia di utilizzare un panno morbido asciutto o una spazzola morbida.*  
*Periodicamente si possono utilizzare creme specifiche.*  
*Tutte le nostre pelli soddisfano le severe leggi e normative europee riguardanti l'uso e la presenza di PCP, CFC, Cromo (VI) e Azocoloranti nel processo di concia.*  
*Tutti i prodotti sono realizzati nel rispetto dell'uomo e dell'ambiente.*

## CURA E MANUTENZIONE DEL TESSUTO

*I tessuti utilizzate per i nostri prodotti sono di altissima qualità.*  
*Per la pulizia quotidiana di superfici in tessuto, si consiglia di utilizzare un panno morbido asciutto o una spazzola morbida.*

## CARE AND MAINTENANCE OF METAL

The metal used for our products are of the highest quality. Possible differences in colour tonality or shades are due to the characteristics of the materials and are to be considered as proof of artisanal workmanship.  
For routine cleaning of parts in metal, steel and brass, we suggest to use a soft or a microfiber cloth, dampened with water or with specific products.  
Never use abrasive or aggressive cleansers.  
Clean stains while they are still fresh.

## CARE AND MAINTENANCE OF LEATHER

The leather used for our products are of the highest quality. Possible differences in colour tonality or shades are due to the natural characteristics of the materials and are to be considered as proof of artisanal workmanship.  
For routine cleaning of leather surfaces, we suggest to use a soft dry cloth or a soft brush.  
Periodically specific products for leather can be used.  
All our leather complies with the strict regulation and European directives regarding the use and the presence of PCP, CFC, Chromo (VI) and Azo dyestuffs during the tanning process.  
All products are made with respect for the mankind and the environment.

## CARE AND MAINTENANCE OF FABRIC

The fabrics used for our products are of the highest quality.  
For routine cleaning of leather surfaces, we suggest to use a soft dry cloth or a soft brush.