

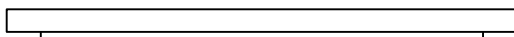
LAZY SUSAN



design by Ferruccio Laviani

LAZY SUSAN

design by Ferruccio Laviani

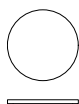


Lazy Susan è un vassoio girevole estremamente pratico e piacevole che può essere posizionato sul top di differenti modelli di tavoli. Un oggetto la cui funzionalità è pari alla bellezza dell'elemento che può essere utilizzato quindi anche come elemento decorativo.

Lazy Susan is a swivel top, extremely practical and pleasant, to be placed on the surface of various types of tables. An item whose functionality is equal to its beauty, to be also used as a decorative element.

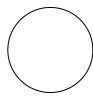
LS75

	Ø	H
cm	75	5
in	30	2



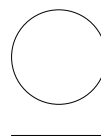
LS90

	Ø	H
cm	90	5
in	35	2



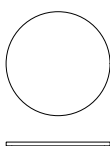
LS100

	Ø	H
cm	100	5
in	39	2



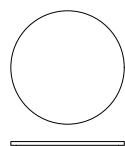
LS110

	Ø	H
cm	110	5
in	43	2



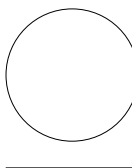
LS120

	Ø	H
cm	120	5
in	47	2



LS140

	Ø	H
cm	140	5
in	55	2



FINITURE IN LEGNO · WOODEN FINISHES

Rovere · Oak wood



Rovere Naturale

Natural Oak

Cod. R



Rovere Gold

Gold Oak

Cod. RO



Rovere tinto Ciliegio

Cherrywood-stained Oak

Cod. RC



Rovere tinto Noisette

Noisette-stained Oak

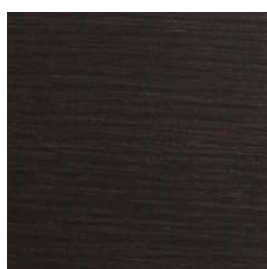
Cod. RNN



Rovere tinto Noce

Walnut-stained Oak

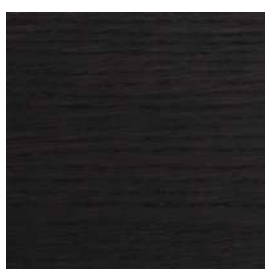
Cod. RNO



Rovere tinto Marrone

Brown-stained Oak

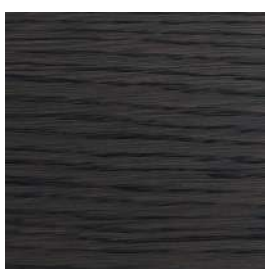
Cod. RW



Rovere tinto Wengè

Wenge-stained Oak

Cod. RWE



Rovere tinto Grigio

Grey-stained Oak

Cod. RG



*Rovere laccato a poro aperto
Nero Intenso*

Open pore lacquered Oak
Jet Black

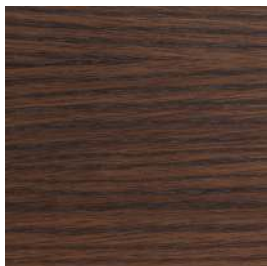
Cod. RPA - RAL-9005

RAL standard per laccatura a poro aperto:

- 9016 Bianco Traffico
- 9001 Bianco Crema
- 8022 Marrone Nerastro
- 7030 Grigio Pietra
- 6013 Verde Canna
- 3020 Rosso Traffico
- 3004 Rosso Porpora

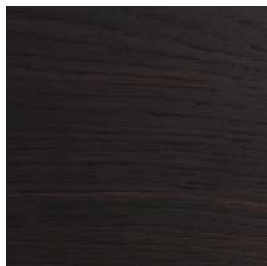
Standard RAL for open pore lacquering:

- 9016 Traffic White
- 9001 Cream
- 8022 Black Brown
- 7030 Stone Grey
- 6013 Reed Green
- 3020 Traffic Red
- 3004 Purple Red

FINITURE IN LEGNO · WOODEN FINISHES*Rovere Termotrattato · Thermo-treated Oak wood**Rovere Termotrattato chiaro*

Light Thermo-treated Oak

Cod. RTL

*Rovere Termotrattato scuro*

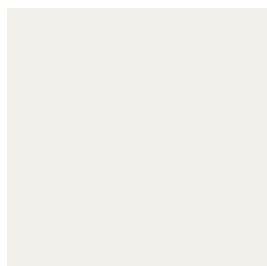
DarkThermo-treated Oak

Cod. RTD

Altre essenze · Other veneers*Wengè*

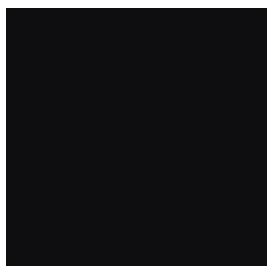
Wenge

Cod. W

LACCATURE · LACQUERING*Finitura opaca o lucida poliesteri · Mat or glossy polyester finish**Bianco Traffico*

Traffic White

RAL 9016

*Nero Intenso*

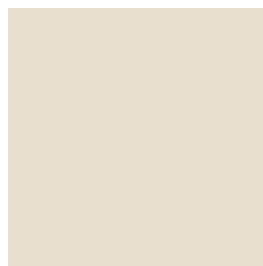
Jet Black

RAL 9005

*Grigio Pietra*

Stone Grey

RAL 7030

*Bianco Crema*

Cream

RAL 9001

*Marrone Nerastro*

Black Brown

RAL 8022

*Verde Canna*

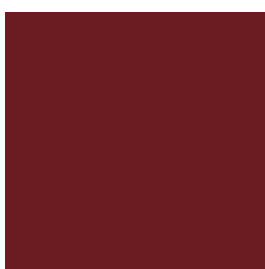
Reed Green

RAL 6013

*Rosso Traffico*

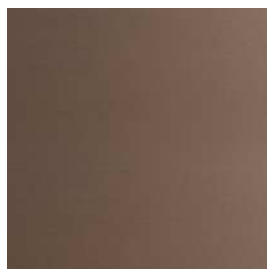
Traffic Red

RAL 3020

*Rosso Porpora*

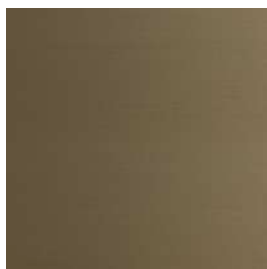
Purple Red

RAL 3004

LACCATURE · LACQUERING*Metallo liquido · Liquid metal**Bronzo*

Bronze

Cod. MLB

*Ottone*

Brass

Cod. MLO

*Stagno*

Tin

Cod. MLS

MARMI · MARBLE TYPES

*Carrara Bianco*

White Carrara

*Emperador Marrone*

Dark Emperador

*Pietra Grey*

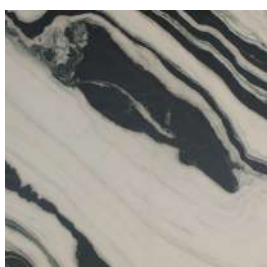
Stone Grey

*Calacatta Oro*

Gold Calacatta

*Grand Noir Antique*

Grand Noir Antique

*Panda*

Panda

CURA E MANUTENZIONE DEL LEGNO

I legni utilizzati per i nostri prodotti sono di altissima qualità e lavorati con la massima maestria.

Le possibili differenze di tonalità o sfumature di colore sono da considerarsi caratteristiche naturali dei materiali e dimostrazione dell'artigianalità di lavorazione.

Per la pulizia quotidiana dei legni naturali, tinti e laccati, si consiglia di utilizzare un panno morbido o in microfibra, inumidito con acqua.

Non utilizzare prodotti spray, cere e prodotti che contengano alcool, solventi o abrasivi.

Pulire le macchie quando sono ancora fresche.

Tutti i prodotti sono realizzati nel rispetto dell'uomo e dell'ambiente.

CURA E MANUTENZIONE DEL MARMO

I marmi utilizzati per i nostri prodotti sono di altissima qualità.

Le possibili differenze di tonalità, sfumature di colore e di venatura, anche all'interno della stessa lastra, sono da considerarsi caratteristiche naturali dei materiali.

Per la pulizia quotidiana dei marmi, si consiglia di utilizzare un panno morbido o in microfibra, inumidito con acqua o con detergenti neutri specifici.

Non utilizzare altri detergenti, sgrassatori o anticalcare, che potrebbero graffiare e danneggiare le superfici.

Pulire le macchie quando sono ancora fresche.

Tutti i prodotti sono realizzati nel rispetto dell'uomo e dell'ambiente.

CARE AND MAINTENANCE OF WOOD

The wood used for our products are of the highest quality and manufactured with the greatest craftsmanship.

Possible differences in colour tonality or shades are due to the natural characteristics of the materials and are to be considered as proof of artisanal workmanship.

For routine cleaning of natural, stained or lacquered wood, we suggest to use a soft or a microfiber cloth, dampened with water.

Never use spray products, wax or any product containing alcohol, solvent or abrasive.

Clean stains while they are still fresh.

All products are made with respect for the mankind and the environment.

CARE AND MAINTENANCE OF MARBLE

The marble types used for our products are of the highest quality.

Possible differences in colour tonality, shades or grain, even in the same slab, are due to the natural characteristics of the materials.

For routine cleaning of marble, we suggest to use a soft or a microfiber cloth, dampened with water or with neutral specific cleansers.

Never use other cleansers, degreasers or anti-limescale, which can scratch or damage the surfaces.

Clean stains while they are still fresh.

All products are made with respect for the mankind and the environment.