

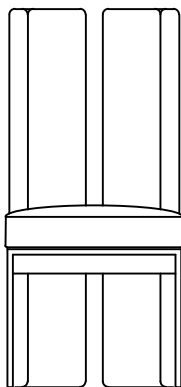
## NINA



design by Elena Pancaldi

## NINA

design by Elena Pancaldi

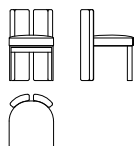


*Sedia con struttura realizzata in legno multistrato curvato con imbottitura in poliuretano espanso rivestito in tessuto o velluto. Il basamento è in ottone o in metallo. Disponibile con schienale in due diverse altezze.*

Chair with frame made of bent multilayer wood padded with expanded polyurethane foam and upholstered with fabric or velvet. The base is in brass or in metal. The backrest is available in two different heights.

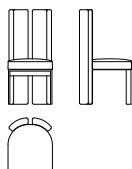
## SACA01

	W	D	H
cm	47	56	75
in	19	22	30



## SACA02

	W	D	H
cm	47	56	100
in	19	22	39



## FINITURE METALLO · METAL FINISHES



*Ottone Naturale Satinato*

Natural Satin Brass

Cod. O



*Ottone Brunito Spazzolato a mano*

Burnished hand-brushed Brass

Cod. OB



*Metallo Cromato*

Chromed Metal

## VELLUTO · VELVET

*Velluto Vegas · Vegas Velvet*



04



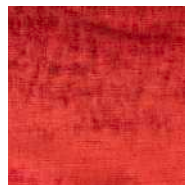
06



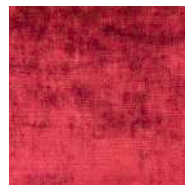
12



74



03



36



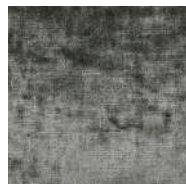
231



233



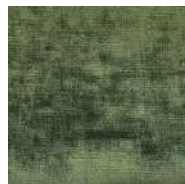
236



241



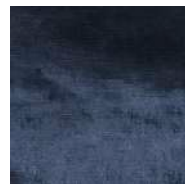
67



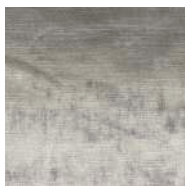
68



35



51



76



60



49

## TESSUTO · FABRIC

Tessuto Bouclè · Bouclè Fabric



Tessuto Melange · Melange Fabric



## CURA E MANUTENZIONE DEL METALLO

*I metalli utilizzati per i nostri prodotti sono di altissima qualità. Le possibili differenze di tonalità o sfumature di colore sono da considerarsi caratteristiche dei materiali e dimostrazione dell'artigianalità di lavorazione.*

*Per la pulizia quotidiana di parti in metallo, acciaio e ottone, si consiglia di utilizzare un panno morbido o in microfibra, inumidito con acqua o con detergenti appropriati.*

*Non utilizzare prodotti abrasivi o aggressivi.*

*Pulire le macchie quando sono ancora fresche.*

## CARE AND MAINTENANCE OF METAL

The metal used for our products are of the highest quality.

Possible differences in colour tonality or shades are due to the characteristics of the materials and are to be considered as proof of artisanal workmanship.

For routine cleaning of parts in metal, steel and brass, we suggest to use a soft or a microfiber cloth, dampened with water or with specific products.

Never use abrasive or aggressive cleansers.

Clean stains while they are still fresh.

## CURA E MANUTENZIONE DEL TESSUTO

*I tessuti utilizzati per i nostri prodotti sono di altissima qualità.*

*Per la pulizia quotidiana di superfici in tessuto, si consiglia di utilizzare un panno morbido asciutto o una spazzola morbida.*

## CARE AND MAINTENANCE OF FABRIC

The fabrics used for our products are of the highest quality.

For routine cleaning of leather surfaces, we suggest to use a soft dry cloth or a soft brush.