



# COR 70 EVOLUTION - HIDDEN SASH

RPT

## ENERGY EFFICIENCY

Thermal Transmission Coefficient

UD  $\geq$  095 (W/mK)

Consult typology, dimensions and filling

## ACCUSTIC INSULATION

Maximum glazing: 1.42"

Maximum acoustic insulation: Rw = 43 dB

## CATEGORIES ACHIEVED AT TEST CENTRE

Protection against atmospheric agents

Air permeability (UNE-EN 12207):

Class 4

Water tightness (UNE-EN 12208):

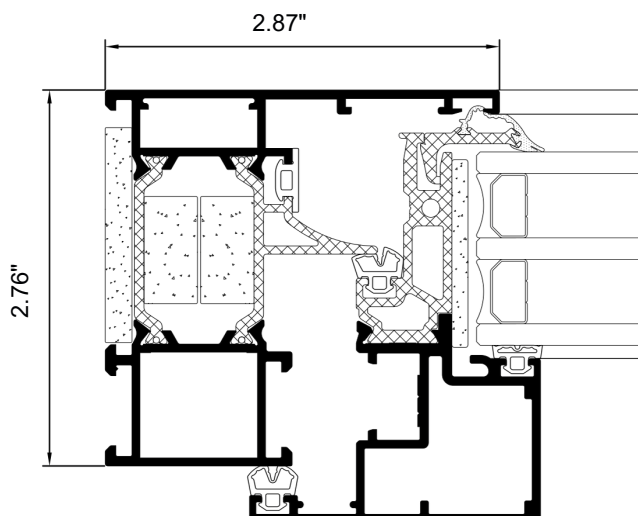
Class E1200

Wind resistance (UNE-EN 12210):

Class C5

Reference test: window 48.43" x 58.27" / 2 sashes

SECTIONS	Frame 2.76" - 9.13" Sash 2.85" - 3.17"	EXTRUSION ALLOY 6063 T-5
MAXIMUM DIMENSIONS	Width (L) = 51.18" Height (H) = 94.49"	POLYAMIDE STRIP LENGTH Polyamide 6,6 reinforced with 25% fiberglass: 1.38"
MAXIMUM WEIGHT/SASH	150 Kg	GASKETS EPDM Triple GASKET
FINISHES	Colour powder coating (RAL, mottled, rough...) According to Qualicoat >60 microns Wood effect powder coating According to Qualideco Anodized According to Ewva Euras Standard Class 15 Optionally Class 20 and 25 Optionally bicoloured	FOAMS Perimeter polyolefin foam in glazing rebate zone
		OPENING POSIBILITIES INWARDS Side hung, tilt & turn and tilt only





# COR 70 EVOLUTION - HALF HIDDEN SASH

RPT

## ENERGY EFFICIENCY

Thermal Transmission Coefficient

UD  $\geq 0.81$  (W/m<sup>2</sup>K)

Consult typology, dimensions and filling

## ACCUSTIC INSULATION

Maximum glazing: 2.48"

Maximum acoustic insulation: Rw = 43 dB

## CATEGORIES ACHIEVED AT TEST CENTRE

Protection against atmospheric agents

Air permeability (UNE-EN 12207):

Class 4

Water tightness (UNE-EN 12208):

Class E1500

Wind resistance (UNE-EN 12210):

Class C5

Reference test: window 48.43" x 58.27" / 2 sashes

SECTIONS	Frame 2.76" - 9.13" Sash 3.17" - 3.49"	EXTRUSION ALLOY 6063 T-5
MAXIMUM DIMENSIONS	Width (L) = 59.06" Height (H) = 102.36"	POLYAMIDE STRIP LENGTH Polyamide 6,6 reinforced with 25% fiberglass: 1.18"-1.38"
MAXIMUM WEIGHT/SASH	150 Kg	GASKETS EPDM Triple Gasket
FINISHES	Colour powder coating (RAL, mottled, rough...) According to Qualicoat >60 microns Wood effect powder coating According to Qualideco Anodized According to Ewwa Euras Standard Class 15 Optionally Class 20 and 25 Optionally bicoloured	FOAMS Perimeter polyolefin foam in glazing rebate zone
		OPENING POSIBILITIES INWARDS Side hung, tilt & turn and tilt only

