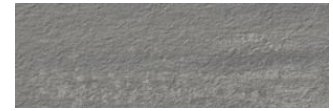




Collection - Granity Air | Finish - Stone Rectified  
Shade variation - V3 | Recycled content - 33 %

**Packing and weights**

Pieces/Box		Boxes/Pallet		weight		
unit	m2	Boxes	m2	Kg/m2	Kg/Box	Kg/Pallet
3	0.79	30	23.70	25.00	19.80	618



	Test	Value/Standard Tolerance	Typical Product Value *	Test Standard
	<b>Length and Width</b>	± 0.6%   MAX. ± 2mm	± 0.1%   ± 0.1%	
	<b>Orthogonality</b>	± 0.5%   MAX. ± 2mm	± 0.3%	
	<b>Straightness</b>	± 0.5%   MAX. ± 1.5mm	± 0.3%	EN ISO 10545-2
	<b>Flatness</b>	± 0.5%   MAX. ± 2mm	± 0.3%	
	<b>Thickness</b>	± 5%   MAX. ± 0.5mm	± 3%   MAX. ± 0.4mm	
	<b>Water Absorption</b>	E ≤ 0.5%	E ≤ 0.1%	EN ISO 10545-3
	<b>Deep Abrasion</b>	≤ 175 mm3	130 mm3	EN ISO 10545-6
	<b>Linear Expansion</b>		≤ 7.00E-06 / °C	EN ISO 10545-8
	<b>Thermal Shock Resistance</b>		Resistant	EN ISO 10545-9
	<b>Frost Resistance</b>		Must not produce noticeable alterations to surface	EN ISO 10545-12
	<b>Lead Release</b>		For special surfaces (for instance, kitchen counter)	EN ISO 10545-15
	<b>Rupture Modulus N/mm2   Breaking Strength in N</b>	⇒ 35N/mm2   ⇒ 1300N	⇒ 45N/mm2 / ⇒ 460Kg/cm2   ⇒ 2500N	EN ISO 10545-4

	Test	Chemical Product	Value/Standard Tolerance	Typical Product Value *	Test Standard
	<b>Resistance to acids and bases (high and low concentrations)</b>	Hydrochloric acid (18%)		To be confirmed case by case	
		Lactic acid (5%)		To be confirmed case by case	
		Potassium hydroxide (100g/l)		To be confirmed case by case	
		Hydrochloric acid (3%)		To be confirmed case by case	EN ISO 10545-13
		Citric acid (100g/l)		To be confirmed case by case	
		Potassium hydroxide (30g/l)		To be confirmed case by case	
	<b>Resistance to cleaning products Resistance to pool additives</b>	ammonium chloride (100g/l)	Minimum Class B	Guaranteed	
		Sodium hypochlorite (20mg/l)		Guaranteed	
	<b>Stain Resistance</b>	Olive Oil		≥ Class 2	
		Green Chromium/Iron oxide	Declare Value	≥ Class 2	EN ISO 10545-14
		Iodine		≥ Class 2	
	<b>Slip Resistance **</b>	DIN EN16165 (Anexo A) - C   DIN EN16165 (Anexo B) - R12			

\* Indicative value

\*\* Tests carried out by certified external laboratories whose results are available upon request at head office. Pavigrés is available to prove in our own laboratories the technical characteristics of any purchased lot upon request. Anti-slip performance is guaranteed at the time of delivery of the product.

It is guaranteed the compliance with the values required by norm EN 14411. Typical Pavigrés reference value is merely indicative, which can vary from real data, and does not have the purpose of any trading proposal.