

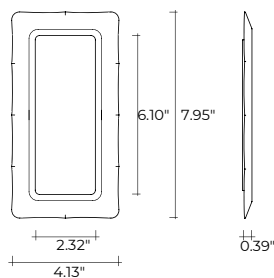


dorian

DESIGN
MASSIMO IOSA GHINI
modello registrato
registered model

Specchio con cornice in vetro fuso a gran fuoco da 0.24" retroargentato; specchio piano da 0.20". Telaio posteriore in metallo verniciato. Possibilità di appendimento verticale od orizzontale.

Free-standing or hanging mirror in 0.24" high temperature melted glass, back-silvered. Flat mirror 0.20" thick, painted metal rear frame. Horizontal or vertical hanging.



dimensioni L, P, H dimensions L, W, H	COD./CODE	L	P/W	H	peso netto net weight (kg)	peso lordo gross weight (kg)	volume imballo package volume (m ³)
Specchio. Wall mirror.	°DO/202	7.95"	0.39"	4.13"	51	100	0,8

(°) Modelli forniti con piedini smontabili per versione da terra.
(°) Items provided with removable feet for free standing version.

FINITURE VETRO PARTE CURVA CURVED GLASS FINISH	SPESSORE THICKNESS
Vetro fumè Smoked glass	0.24"
Vetro bronzo Bronze glass	0.24"
FINITURE VETRO PARTE CURVA + VETRO SPECCHIO CENTRALE CURVED GLASS+CENTRAL MIRROR GLASS FINISH	SPESSORE THICKNESS
Vetro fumè Smoked glass	0.20"/0.24"
Vetro bronzo Bronze glass	0.20"/0.24"

FINITURE
FINISHES

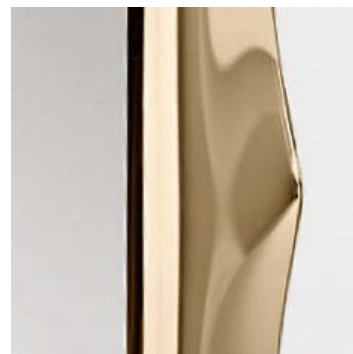
Cornice in vetro fuso
Fused glass frame



vetro fuso retroargentato
back-silvered fused glass



vetro fumé fuso
e retroargentato
Fused and back-silvered
smoked glass



vetro bronzo fuso
e retroargentato
Fused and back-silvered
bronze glass