



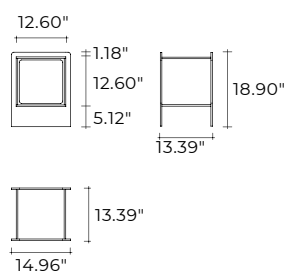
magique cubo

DESIGN
STUDIO KLASS

Comodino con cubo contenitore in vetro da 0.39" disponibile in diverse finiture.

Bedside table with cubic inner compartment in 0.39" thick glass. Available in various finishes.

portata sul piano: 20 kg
load capacity on top: 20 kg



dimensioni L, P, H <i>dimensions L, W, H</i>	COD./CODE	L	P/W	H	peso netto <i>net weight</i> (kg)	peso lordo <i>gross weight</i> (kg)	volume imballo <i>package volume</i> (m ³)
Comodino con struttura e contenitore in vetro trasparente. <i>Structure and inner compartment in transparent glass.</i>	MQC/3834	14.96"	13.39"	18.90"	15	25	0,16
Comodino con struttura in vetro extralight, contenitore in vetro bianco opale. <i>Extralight glass structure, opal white glass inner compartment.</i>	MQC/3834XB	14.96"	13.39"	18.90"	15	25	0,16
Comodino con struttura in vetro extralight, contenitore in vetro fumè. <i>Extralight glass structure, smoked glass inner compartment.</i>	MQC/3834XC	14.96"	13.39"	18.90"	15	25	0,16
Comodino con struttura in vetro fumè, contenitore in vetro Nero95. <i>Smoked glass structure, Black95 glass inner compartment.</i>	MQC/3834GN	14.96"	13.39"	18.90"	15	25	0,16
Comodino con struttura in vetro extralight, contenitore in vetro bronzo. <i>Extralight glass structure, bronze glass inner compartment.</i>	MQC/3834XBR	14.96"	13.39"	18.90"	15	25	0,16
Comodino con struttura e contenitore in vetro extralight. <i>Structure and inner compartment in extralight glass.</i>	MQC/3834X	14.96"	13.39"	18.90"	15	25	0,16

FINITURE
FINISHES

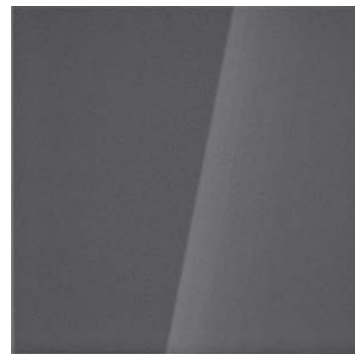
Struttura in vetro
Glass structure



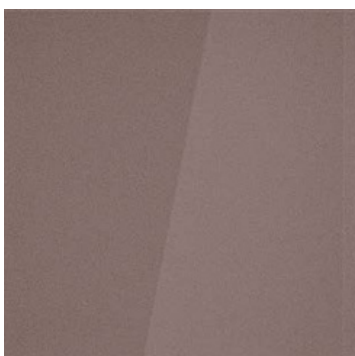
vetro trasparente
transparent glass



vetro extralight
extralight glass



vetro fumè
smoked glass



vetro bronzo
bronze glass

FINITURE
FINISHES

Cubo contenitore in vetro
Glass cubic inner compartment



vetro trasparente
transparent glass



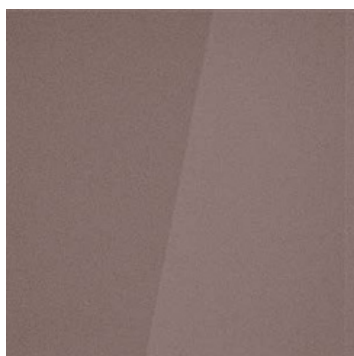
vetro extralight
extralight glass



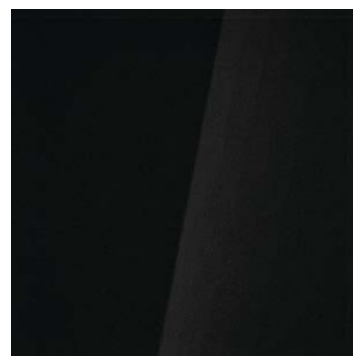
vetro bianco opale
opal white glass



vetro fumè
smoked glass



vetro bronzo
bronze glass



vetro nero95
black95 glass