



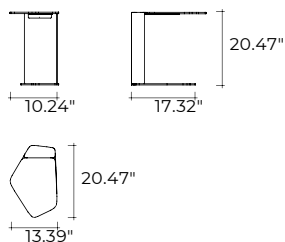
## stone

DESIGN  
MENEHELLO PAOLELLI  
modello registrato  
registered model

Tavolino di servizio con piano in vetro da 0.39" fuso a gran fuoco, retroverniciato Testa di Moro oppure Nero. Struttura in legno massello disponibile nelle finiture Tabacco oppure Nero. Base in metallo verniciato nero.

*Side table with 0.39" fused glass top, Dark Brown or Black back-painted. Solid wood structure available in Tobacco or Black finish. Black laquered metal base.*

portata sul piano: 10 kg  
load capacity on top: 10 kg



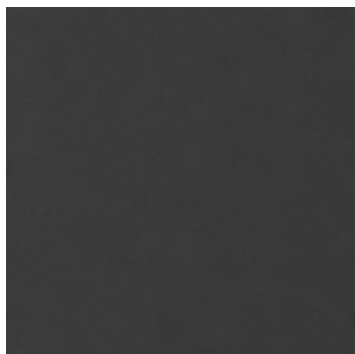
dimensioni L, P, H dimensions L, W, H	COD./CODE	L	P/W	H	peso netto net weight (kg)	peso lordo gross weight (kg)	volume imballo package volume (m <sup>3</sup> )
Piano in vetro fuso retroverniciato Testa di Moro; struttura in legno finitura Tabacco. <i>Dark Brown back-painted glass top; Tobacco finish wood structure.</i>	STO52/ TA/VF-MR	13.39"	20.47"	20.47"	15	25	0,19
Piano in vetro fuso retroverniciato Nero; struttura in legno finitura Nero. <i>Black back-painted glass top; Black finish wood structure.</i>	STO52/ NE/VF-NE	13.39"	20.47"	20.47"	15	25	0,19

---

FINITURE  
FINISHES

---

Base in metallo  
Metal base



Nero  
Black

Struttura in legno massello  
Solid wood structure



Nero  
Black



Tabacco  
Tobacco

Piano in vetro fuso retroverniciato  
Back-painted fused glass top



Nero  
Black



Testa di moro  
Dark brown