



york

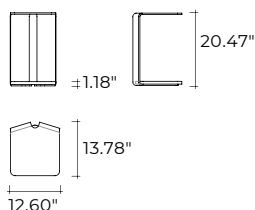
DESIGN
YONOH STUDIO

modello registrato
registered model

Tavolino di servizio con struttura in vetro curvato da 0.39" disponibile nelle varianti extralight, bronzo o fumé. Base in marmo.

Side table with 0.39" curved glass structure, available in extralight, bronze or smoked glass. Marble base.

portata sul piano: 10 kg
load capacity on top: 10 kg



dimensioni L, P, H dimensions L, W, H	COD./CODE	L	P/W	H	peso netto net weight (kg)	peso lordo gross weight (kg)	volume imballo package volume (m ³)
Tavolino in vetro curvato con base in marmo Cat.M1. <i>Side table in curved glass with marble base, Cat.M1.</i>	YOR52/	12.60"	13.78"	20.47"	13	22	0,14
Tavolino in vetro curvato con base in marmo Cat.M2. <i>Side table in curved glass with marble base, Cat.M2.</i>	YOR52/	12.60"	13.78"	20.47"	13	22	0,14

BASE IN MARMO MARBLE BASE		
CAT. MARMO MARBLE CAT.	NOME NAME	CODICE CODE
CAT.M1	Mystic Brown Mystic Brown	M1MB
	Grigio Carnico Carnico Grey	M1GC
CAT.M2	Calacatta Royal Calacatta Royal	M2CR
	Manhattan Manhattan	M2MN

STRUTTURA IN VETRO GLASS STRUCTURE	
NOME NAME	CODICE CODE
Extralight <i>Extralight</i>	EX
Fumé <i>Smoked</i>	GR
Bronzo <i>Bronze</i>	BR

FINITURE
FINISHES

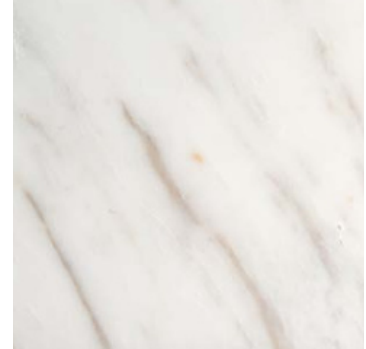
Base in marmo
Marble glass



Grigio Carnico
Carnico grey



Mystic
Brown
Mystic
Brown

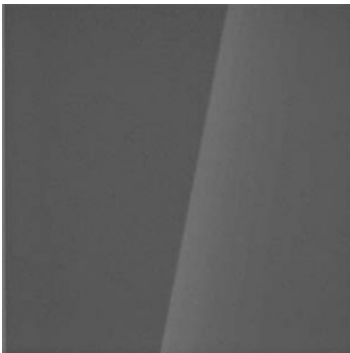


Calacatta Royal
Calacatta Royal



Manhattan
Manhattan

Struttura in vetro curvato
Curved glass structure



Fumé
Smoked



Bronz
o
Bronz
e



Extralight
Extralight