

**Métallique**

**Minimal,  
contemporary  
allure.**




**KRONOS**

CERAMICHE

**Métallique**

**Minimal,  
contemporary  
allure.**

# Métallique

-  **BRUNE** P06
-  **NOIR** P14
-  **LAME** P24



OXYDE

NOIR

Métallique

BRUNE



BRUNE. PRECIEUSE INTENSITE



# Métallique



**BRUNE**

# Métallique



## BRUNE



## Métallique



## BRUNE

WALL brune oxydé 120x280 - asta ottone 0,5x3x280 - porfido . DESK brune tranché 60x120 . FLOOR porfido 60x120

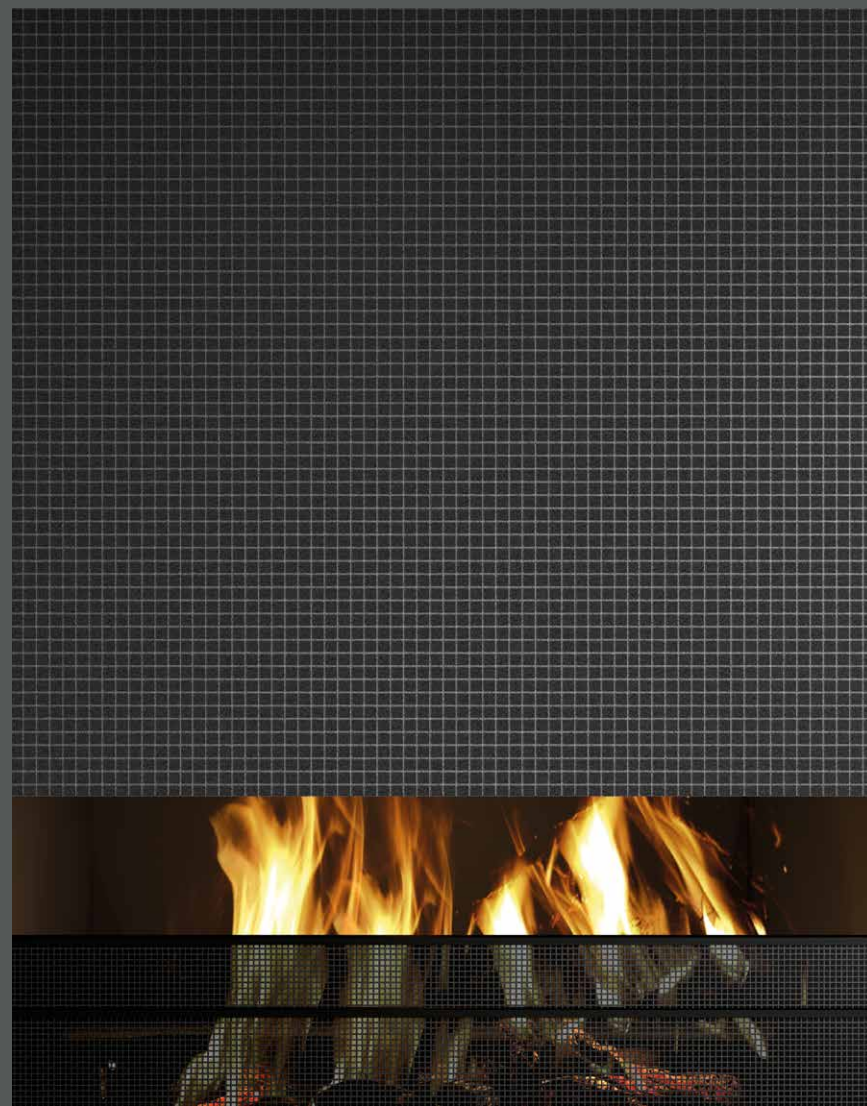
**Métallique**

**NOIR**



**NOIR. DESIR SECRET.**

# Métallique



**NOIR**



# Métallique



# NOIR

# Métallique



# NOIR



**Métallique**

**NOIR**



# Métallique

## LAME



LAME. LUMINOSITE DIFFUSE.



# Métallique



## LAME

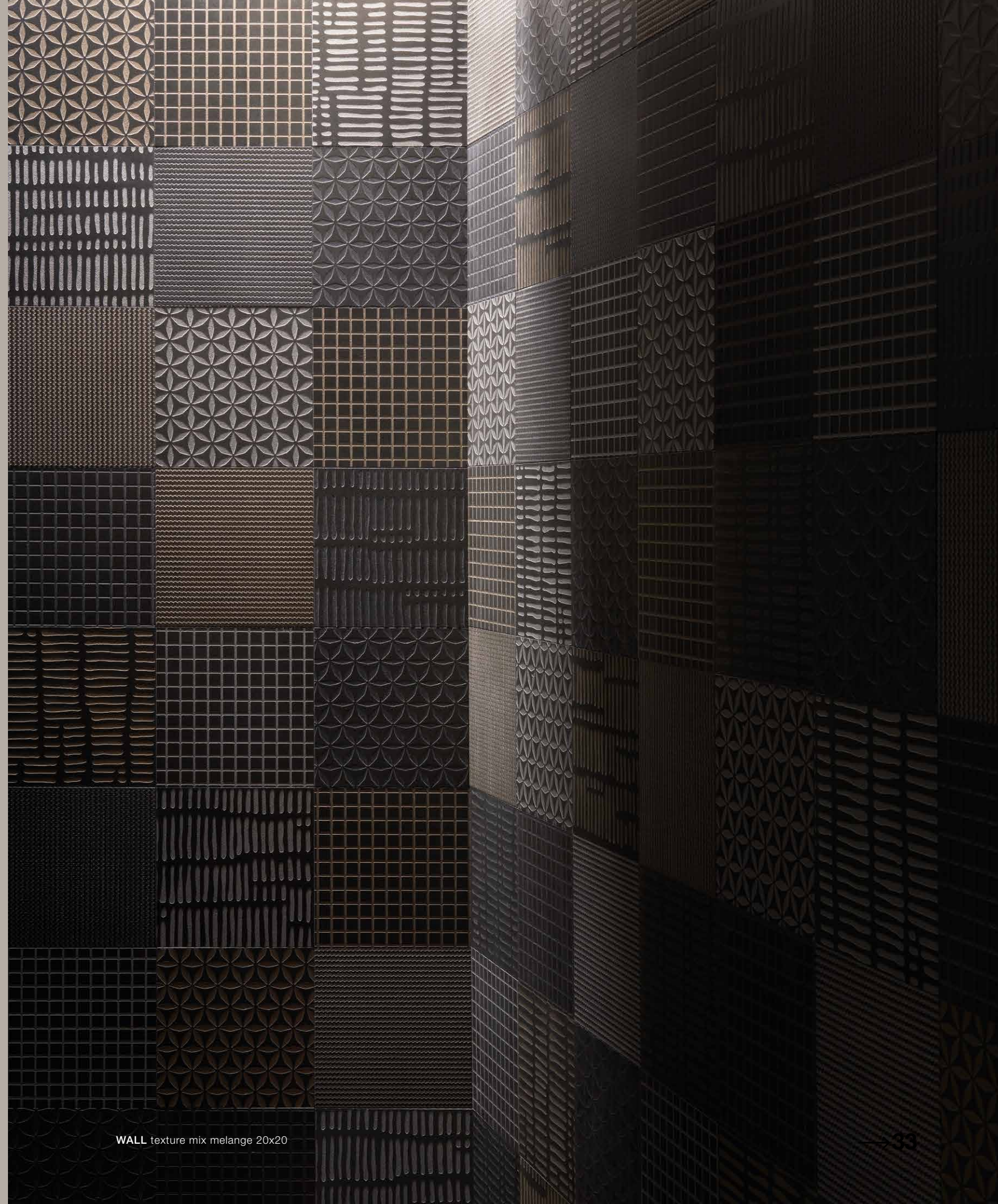
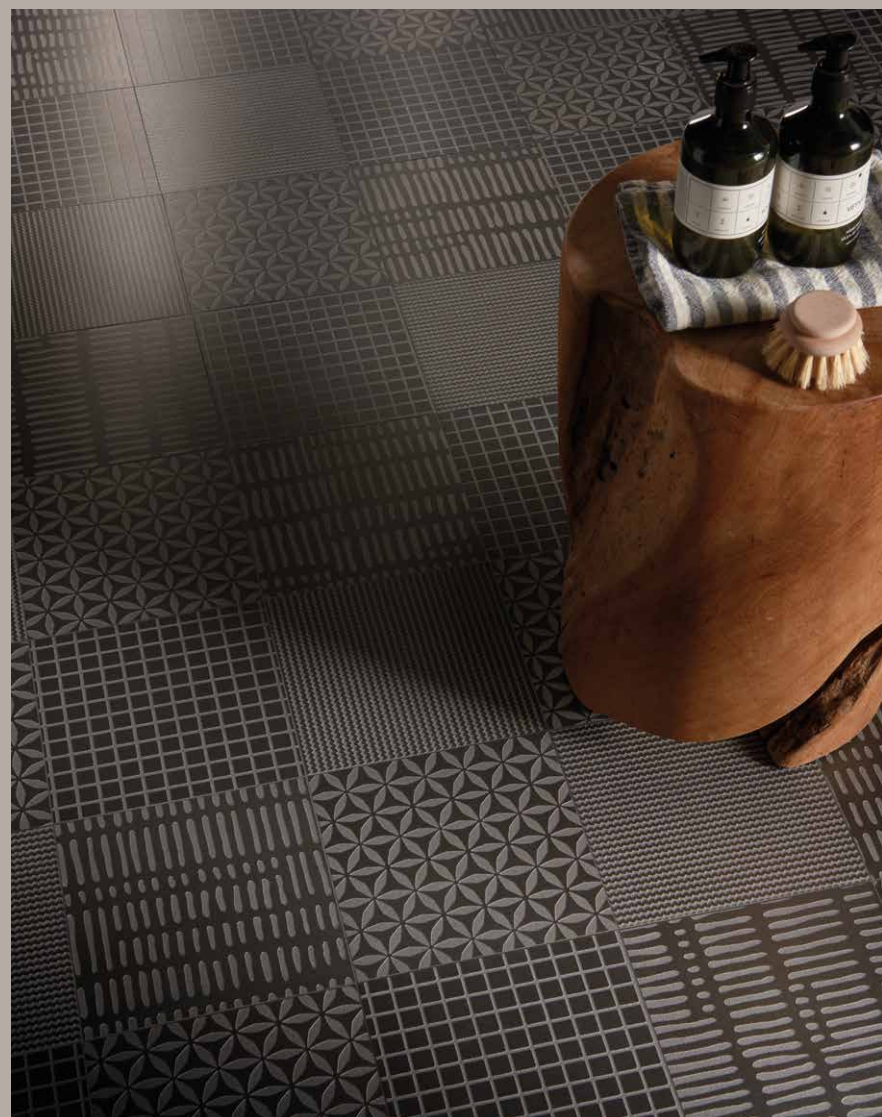


# Métallique



**LAME**

# Métallique



## Métallique



6 mm - ¼"



ME003 BRUNE rett  
120x280 - 47¼"x110½"



ME056 ASTA OTTONE  
0,5x3x280 - 0,2"x1,1"x110½"



ME055 ASTA FERRO  
0,5x3x280 - 0,2"x1,1"x110½"

6 mm - ¼"



ME007 BRUNE OXYDE rett  
120x280 - 47¼"x110½"

ALCUNI PRODOTTI NON DISPONIBILI.  
GAMMA AGGIORNATA SUL SITO WEB.  
SOME PRODUCTS UNAVAILABLE.  
UPDATED RANGE ON THE WEBSITE.

10 mm - ⅜"



ME022 BRUNE rett  
60x120 - 23¾"x47¼"



ME033 BRUNE batt.  
4,60x60 - 1⅞"x23¾"

10 mm - ⅜"



ME017 BRUNE OXYDE rett  
120x120 - 47¼"x47¼"



ME027 BRUNE OXYDE rett  
60x120 - 23¾"x47¼"



ME087 BRUNE OXYDE rett  
80x80 - 31½"x31½"

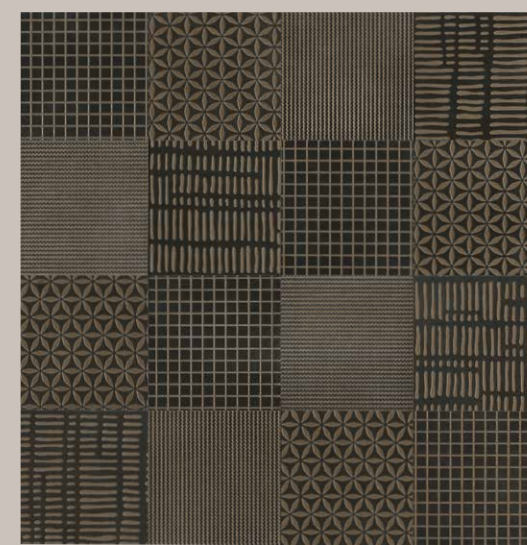
Decori e mosaici abbinabili a brune e brune oxyde.  
Decors and mosaics can be combined with brune and brune oxyde.



ME062 ETNIQUE BRUNE rett  
60x120 - 23¾"x47¼"



ME072 CARRE BRUNE rett  
60x120 - 23¾"x47¼"



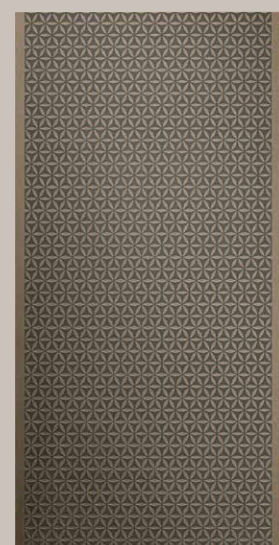
ME042 TEXTURE MIX BRUNE rett  
20x20 - 7⅞"x 7⅞"



ME047 MOSAICO BRUNE  
30x30 - 11⅞"x11⅞"



ME082 HEXA BRUNE  
31,1x32,2 - 12¾"x12¾"



ME067 CELTIQUE BRUNE rett  
60x120 - 23¾"x47¼"



ME077 TRANCHE BRUNE rett  
60x120 - 23¾"x47¼"



ME044 TEXTURE MIX MELANGE rett  
20x20 - 7⅞"x 7⅞"

6 mm - ¼"



ME001 NOIR rett  
120x280 - 47¼"x110½"



ME056 ASTA OTTONE  
0,5x3x280 - 0,2"x1,1"x110½"



ME055 ASTA FERRO  
0,5x3x280 - 0,2"x1,1"x110½"

6 mm - ¼"



ME005 NOIR OXYDE rett  
120x280 - 47¼"x110½"

ALCUNI PRODOTTI NON DISPONIBILI.  
GAMMA AGGIORNATA SUL SITO WEB.  
SOME PRODUCTS UNAVAILABLE.  
UPDATED RANGE ON THE WEBSITE.

10 mm - ¾"



ME020 NOIR rett  
60x120 - 23¾"x47¼"



ME030 NOIR batt.  
4,60x60 - 1¾"x23¾"

10 mm - ¾"



ME015 NOIR OXYDE rett  
120x120 - 47¼"x47¼"



ME025 NOIR OXYDE rett  
60x120 - 23¾"x47¼"



ME085 NOIR OXYDE rett  
80x80 - 31½"x31½"

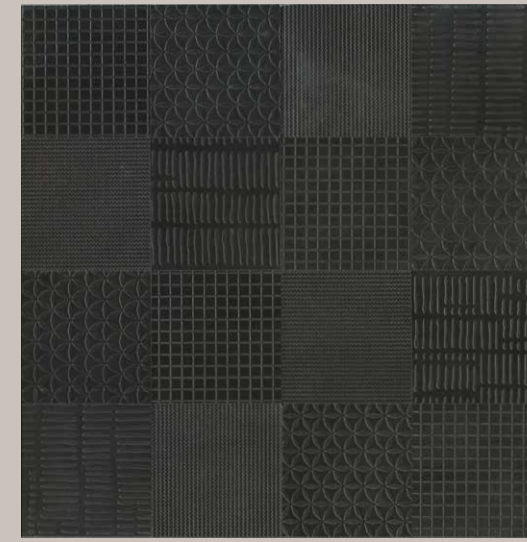
Decori e mosaici abbinabili a noir e noir oxyde.  
Decors and mosaics can be combined with noir and noir oxyde.



ME060 ETNIQUE NOIR rett  
60x120 - 23¾"x47¼"



ME070 CARRE NOIR rett  
60x120 - 23¾"x47¼"



ME040 TEXTURE MIX NOIR rett  
20x20 - 7¾"x 7¾"



ME045 MOSAICO NOIR  
30x30 - 11¾"x11¾"



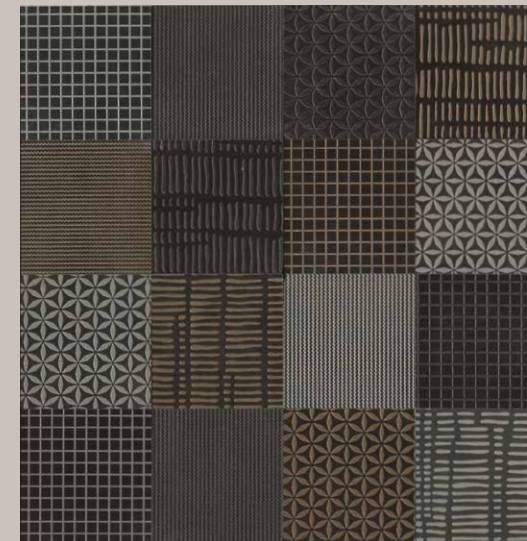
ME080 HEXA NOIR  
31,1x32,2 - 12¾"x12¾"



ME065 CELTIQUE NOIR rett  
60x120 - 23¾"x47¼"



ME075 TRANCHE NOIR rett  
60x120 - 23¾"x47¼"



ME044 TEXTURE MIX MELANGE rett  
20x20 - 7¾"x 7¾"

6 mm - ¼"



ME002 LAME rett  
120x280 - 47¼"x110½"



ME056 ASTA OTTONE  
0,5x3x280 - 0,2"x1,1"x110½"



ME055 ASTA FERRO  
0,5x3x280 - 0,2"x1,1"x110½"

6 mm - ¼"



ME006 LAME OXYDE rett  
120x280 - 47¼"x110½"

ALCUNI PRODOTTI NON DISPONIBILI.  
GAMMA AGGIORNATA SUL SITO WEB.  
SOME PRODUCTS UNAVAILABLE.  
UPDATED RANGE ON THE WEBSITE.

10 mm - ⅜"



ME021 LAME rett  
60x120 - 23¾"x47¼"



ME031 LAME batt.  
4,60x60 - 1⅞"x23¾"

10 mm - ⅜"



ME016 LAME OXYDE rett  
120x120 - 47¼"x47¼"



ME026 LAME OXYDE rett  
60x120 - 23¾"x47¼"

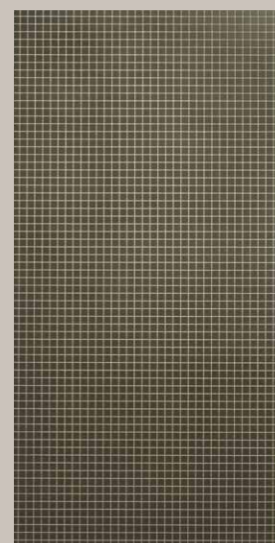


ME086 LAME OXYDE rett  
80x80 - 31½"x31½"

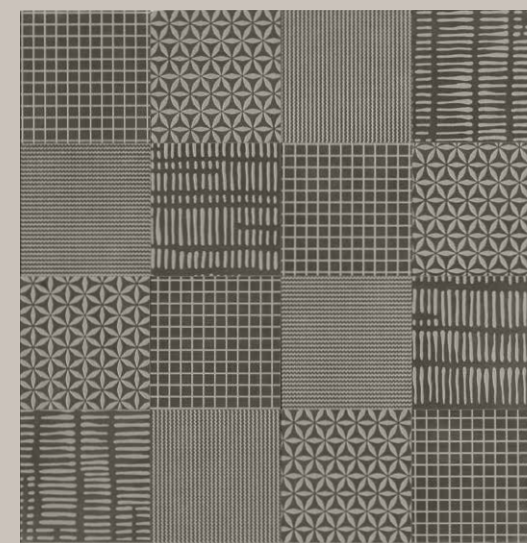
Decori e mosaici abbinabili a lame e lame oxyde.  
Decors and mosaics can be combined with lame and lame oxyde.



ME061 ETNIQUE LAME rett  
60x120 - 23¾"x47¼"



ME071 CARRE LAME rett  
60x120 - 23¾"x47¼"



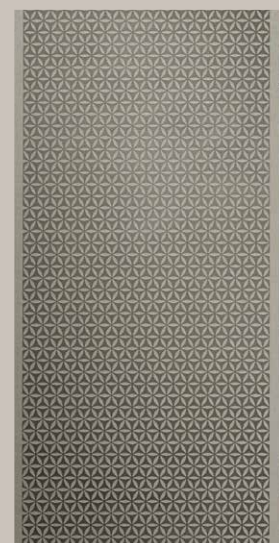
ME041 TEXTURE MIX LAME rett  
20x20 - 7⅞"x 7⅞"



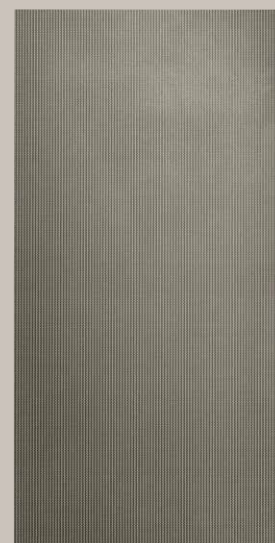
ME046 MOSAICO LAME  
30x30 - 11⅞"x11⅞"



ME081 HEXA LAME  
31,1x32,2 - 12¾"x12¾"



ME066 CELTIQUE LAME rett  
60x120 - 23¾"x47¼"



ME076 TRANCHE LAME rett  
60x120 - 23¾"x47¼"



ME044 TEXTURE MIX MELANGE rett  
20x20 - 7⅞"x 7⅞"

# Métallique

## IMBALLI\_PACKAGING\_EMBALLAGES\_VERPACKUNGEN

METALLIQUE	Thickness	Pezzi per scatola	M <sup>2</sup> per scatola	Kg per scatola	Scatole per pallet	M <sup>2</sup> per pallet	KG per pallet
120x280 - 47¼"x110½"	6	1	3,36	47,40	20	67,20	968
120x120 - 47¼"x47¼"	10	2	2,88	67,00	18	51,84	1.226
80x80 - 31½"x31½"	10	2	1,28	30,00	40	51,20	1.220
60x120 - 23¾"x47¼"	10	2	1,44	33,50	30	43,20	1.025
30x30 - mosaico tessere	10	10	0,90	20,20	30	27,00	626
32,2x31,1 mosaico hexa	10	9	1,00	29,00	36	36,00	1.064

## VARIAZIONE CROMATICA\_SHADE VARIATION\_VARIATION CHROMATIQUE\_CHROMATISCHE ABWEICHUNG

 <b>V1</b> aspetto uniforme uniform appearance aspect uniforme Gleichmäßiges Bild	 <b>V2</b> lieve variazione slight variation légère différence de nuance Leichte Abweichung	 <b>V3</b> moderata variazione moderate variation variation modérée Mäßige Abweichung	 <b>V4</b> forte variazione substantial variation variation intense Stärke Abweichung
--	--	--	--

METALLIQUE

CARATTERISTICHE E PROPRIETÀ CHARACTERISTICS OR PROPERTIES CARACTERISTIQUES OU PROPRIETES EIGENSCHAFTEN UND GÜTEMERKMALE	NORME STANDARDS NORMES NORMEN	SECONDO LE NORME COMPLIANCE WITH STANDARDS CONFORME AUX NORMES ENTSPRECHEND DEN NORMEN UNI EN 14411 G	
<b>QUALITÀ DELLA SUPERFICIE</b> - SURFACE QUALITY QUALITE DE LA SURFACE - OBERFLAECHEQUALITAET		<b>IL 95% MIN DELLE PISTRELLE DEVE ESSERE ESENTE DA DIFETTI VISIBILI</b> / AT LEAST 95% OF THE TILES MUST BE FREE FROM VISIBLE FLAWS / 95% MIN DES CARREUX NE DOIVENT PRESENTER AUCUN DÉFAUT VISIBLE / MINDESTENS 95% DER FLIESEN MÜSSEN FREI VON SICHTBAREN	CONFORME ALLE NORME - COMPLIES WITH STANDARD - CONFORME AUX NORMES - NORMGERECHT
<b>DEVIAZIONE MASSIMA DI RETTILINEITÀ IN %</b> - MAXIMUM STRAIGHTNESS DEVIATION IN % - MARGE DE TOLERANCE DE RECTITUDE EN % - ZULAESSIGE HOECHSTABWEICHUNG DER KANTENGERADHEIT IN PROZENTEN		± 0,3 %	± 0,1 %
<b>DEVIAZIONE AMMISSIBILE IN %, DELLO SPESSORE MEDIO DI OGNI PIASTRELLA DALLA DIMENSIONE DI FABBRICAZIONE</b> - ADMITTED DEVIATION, IN %, OF THE AVERAGE THICKNESS OF EACH TILE FROM THE PRODUCTION DIMENSIONS - MARGE DE TOLERANCE, EN POURCENTAGE, ENTRE L'EPAISSEUR MOYENNE DE CHAQUE CARREAU ET LA DIMENSION DE FABRICATION - ZULÄSSIGE ABWEICHUNG DER DURCHSCHNITTSDICKE JEDER FLIESE VOM HERSTELLMASS IN PROZENTEN	ISO 10545-2	± 5 %	± 5 %
<b>DEVIAZIONE MASSIMA DI ORTOGONALITÀ IN %</b> - MAXIMUM RIGHT-ANGLE DEVIATION IN % - MARGE DE TOLERANCE D'ANGULARITE IN % - HOECHSTABWEICHUNG DER RECHTWINKLIGKEIT IN PROZENTEN		± 0,3 %	± 0,2 %
<b>PLANARITÀ</b> - FLATNESS - PLANEITE - EBENFLAECHEIGKEIT		± 0,4 %	± 0,2 %
<b>LUNGHEZZA E LARGHEZZA</b> - LENGTH AND WIDTH LONGUEUR ET LARGEUR - LANGE UND BREITE		± 0,3 %	± 0,15 %
<b>ASSORBIMENTO D' ACQUA</b> - WATER ABSORPTION ABSORPTION D'EAU - WASSERAUFNAHME	ISO 10545-3	≤ 0,5 %	average value 0,08%
<b>RESISTENZA ALLA FLESSIONE</b> - BENDING STRENGTH RESISTANCE À LA FLEXION - BIEGEZUGFESTIGKEIT	ISO 10545-4	R ≥ 35 N/mm <sup>2</sup>	average value 52 N/mm <sup>2</sup>
<b>RESISTENZA ALL'URTO</b> - IMPACT RESISTANCE RESISTANCE AUX CHOCS - SCHLAGFESTIGKEIT	ISO 10545-5	VALORE DICHIARATO - DECLARED VALUE VALEUR DECLAREE - ANGEGBENER WERT	0,88
<b>RESISTENZA ALL'ABRASIONE PROFONDA</b> - RESISTANCE TO DEEP ABRASION RESISTANCE A L'ABRASION PROFONDE - WIDERSTÄNDSFAKIGKEIT GEGEN TIEFENABRIEB	ISO 10545-6	≤175 mm <sup>3</sup>	<128 mm <sup>3</sup>
<b>COEFF. DI DILATAZIONE TERMICA LINEARE</b> - COEFFICIENT OF LINEAR THERMAL-EXPANSION - COEFF. D'EXTENSION THERMIQUE LINEAIRE - LINEAR WÄRMEAUDEHNUNGS-KOEFFIZIENT	ISO 10545-8	-	α=7x10 <sup>-6</sup> /°C <sup>-1</sup>
<b>RESISTENZA AGLI SBALZI TERMICI</b> - THERMAL SHOCK RESISTANCE RESISTANCE AUX ECARTS THERMIQUES - TEMPERATURWECHSELBESTÄNDIGKEIT	ISO 10545-9	TEST SUPERATO SECONDO EN ISO 10545-1 PASS ACCORDING EN ISO 10545-1 TEST OBTENUS SELON EN ISO 10545-1 TEST LAUT EN ISO 10545-1 BESTANDEN	NESSUN DANNO - NO DAMAGE - AUCUN DOMMAGE - KEIN SCHADEN
<b>RESISTENZA AL GELO</b> - FROST RESISTANCE RESISTANCE AU GEL - FROSTBESTÄNDIGKEIT	ISO 10545-12	TEST SUPERATO SECONDO EN ISO 10545-1 PASS ACCORDING EN ISO 10545-1 TEST OBTENUS SELON EN ISO 10545-1 TEST LAUT EN ISO 10545-1 BESTANDEN	NESSUN DANNO - NO DAMAGE - AUCUN DOMMAGE - KEIN SCHADEN
<b>RESISTENZA AGLI AGENTI CHIMICI</b> - CHEMICAL RESISTANCE RESISTANCE A L'ATTAQUE CHIMIQUE - BASTÄNDIGKEIT GEGEN CHEMIKALIEN	ISO 10545-13	UB MIN.	UA - UBL - UHB
<b>RESISTENZA ALLE MACCHIE</b> - RESISTANCE TO STAIN RESISTANCE AUX TACHES - FLECKENFESTIGKEIT	ISO 10545-14	VALORE DICHIARATO - DECLARED VALUE VALEUR DECLAREE - ANGEGBENER WERT	Classe 5
<b>RESISTENZA AL FUOCO</b> - FIRE RESISTANCE RESISTANCE AU FEU - FEUERWIDERSTAND	EN 13501 - 1	VALORE DICHIARATO - DECLARED VALUE VALEUR DECLAREE - ANGEGBENER WERT	CLASSE A1 - A1 FL
<b>RESISTENZA ALLO SCIVOLAMENTO</b> - SLIP RESISTANCE RESISTANCE AU GLISSEMENT - BESTIMMUNG DER RUSTCHEMMENDE EIGENSCHAFT	<b>B.C.R. C.A. B.C.R. G.B D. M. 236 DEL 4.6 1989</b>	> 0,40	CONF
	ASTM C 1028/07 <b>BOT 3000</b>	Dry SCOF > 0,60	CONF
	ASTM C 1028/07 <b>BOT 3000</b>	Wet SCOF > 0,60	CONF
	ANSI A137.1 <b>BOT 3000</b>	Wet DCOF > 0,42	CONF
	DIN 51130	-	R9
	ENV 12633	≥ CL 1	CONF
UNI EN 13036 - 4 2011	≥ 36	CONF	
<b>STABILITÀ DEI COLORI ALLA LUCE E AI RAGGI U.V.</b> COLOUR STABILITY ON EXPOSURE TO LIGHT AND UV RAYS STABILITE DES COULEURS A LA LUMIERE ET AUX RAYONS U.V. FARBECHEITHIT UNTER LICHTEINLUSS UND UV-STRAHLUNG	DIN 51094	VALORE DICHIARATO - DECLARED VALUE - VALEUR DECLAREE - ANGEGBENER WERT	CONFORME ALLE NORME, NO VARIAZIONI COMPLIES WITH STANDARD, NO VARIATION CONFORME AUX NORMES, PAS DE CHANGEMENTS NORMGERECHT, KEINE AENDERUNG

**Métallique**





**Kronos 2 ceramiche S.p.A.**

Sede legale: Strada delle Fornaci, 20 41126 Modena Italy  
Sede amministrativa: Via Giardini, 62 41042 Fiorano Modenese (Mo) Italy  
tel. +39 0536 927711 - [info@kronosceramiche.com](mailto:info@kronosceramiche.com)  
[www.kronosceramiche.com](http://www.kronosceramiche.com)

