

# COLOURS

The rich colour range of window, balcony doors, HS and PSK terrace systems allows almost unlimited options for colour matching to customers' personal needs and preferences. The excellent quality of the foils used during production guarantees that the highest quality and durability of the colour will be maintained for many years.

## FOILS REFERENCE COLOURS

|  |   |   |
|--|---|---|
|    |    |    |
| Concrete grey<br>702305-167  | Basalt grey smooth<br>701205-097  | Crown Platinum<br>9.1293001-195   |
|    |    |    |
| Light grey<br>725105-167   | Anthracite Ulti-Matt<br>02.20.71.000001-504700  | Quartz grey smooth<br>703905-097  |
|  |  |  |
| Slate<br>1.0065002-097   | Slate grey smooth<br>02.11.71.000040-097  | Black Ulti-Matt<br>02.20.01.000002-504700   |

\*Print may vary from the actual colour.



|   |   |   |   |   |  |  |
|---|---|---|---|---|--|--|
|    |    |    |    |    |   |   |
| Cream<br>137905-167   | Quartzite grey<br>703905-167  | Dark red<br>308105-167  | Moss green<br>600505-167  | FX white<br>915205-168  | Anthracite<br>701605-167   | Chocolate brown<br>887505-167  |
|    |    |    |    |    |   |   |
| Natural oak<br>3118076-167  | Oregon<br>2115008-167   | Rosewood<br>851805-167  | Douglas fir<br>3152009-167  | Dark oak<br>2052089-167   | Macore<br>3162002-167  | Mahogany<br>2097013-167  |
|   |   |   |   |   |  |  |
| Grey<br>715505-167  | Smooth anthracite<br>701605-097   | Golden oak<br>2178001-167   | Basalt grey<br>70125-097  | Nut<br>2178007-167  | Sheffield oak light<br>F 456-3081  | Winchester<br>49240015-148   |
|  |  |  |  |  |  |  |
| White Ulti-Matte<br>530.30.70.0057.001  | Pyrite<br>02.12.17.000001   | Jet Black CC+<br>476-6062   | Dark green<br>612505-167  | Turner oak<br>F470-3001   |  |  |



## GLASS PANES

We offer many types of glass panes that are characterised by the highest quality of workmanship. Choose panes for your windows that will meet your expectations and give your interior unique character.

We have been manufacturing multiple glazed panes since 1994. We have a state-of-the-art glass tempering plant and our own research laboratories, which ensure the highest quality.

The glazed units we manufacture can be fitted with special capillaries to equalise the pressure inside the glass with atmospheric pressure. Thanks to this solution, the glazing packages will perform perfectly in your premises.



Option to sandblast the glass in any way you wish (in 3 shades of grey)\* or to use ready-made designs.

## INFILLING MATERIAL

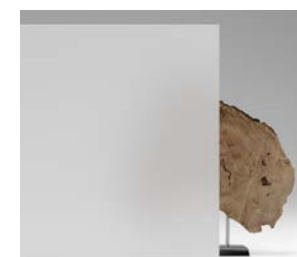
- **ARGON** - all glazed units are infilled with argon gas as standard, which guarantees very good thermal insulation. This has resulted in glazed units with Ug value of between 1.1 and 0.5 W/(m²K).



3-pane (2-chamber) 48 mm units with glass-pane spacer made of galvanised steel.



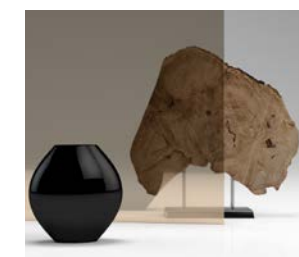
## TYPE OF GLASS



Matt



Striped sandblasted glass\*



Reflect-float brown 6 mm



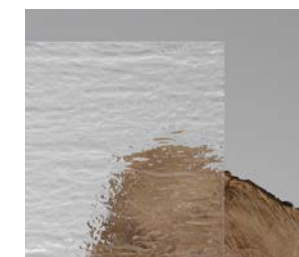
Reflect-float blue 6 mm



Chinchilla ornament



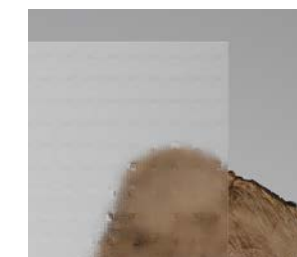
Delta ornament



Silvit ornament



Cathedral ornament



Master Carre ornament



Rain ornament



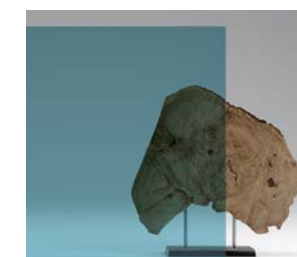
Antisol green



Antisol brown



Antisol grey



Antisol blue



Float 4, 6, 8, 10 m  
Thermal coating option.



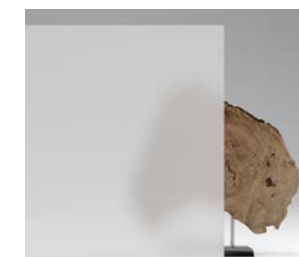
Laminated glass  
Thermal coating option.



Black Line



Mirastar



Satin matte

\* For sandblasting, contact Drutex's Technology Department or ask your dealer.