



Nenuphar | Coffee Table

The Nenuphar gently floats on the surface with different cascading tops that create a charming chromatic effect. The brass and crystal acrylic feet maintain the floating illusion, while providing a playful contrast with the inlay marquetry technique and lacquered top.

AS PICTURED

MATERIALS & FINISHES

Top & lower sections: American Walnut veneer inlay marquetry in matt finishing

Middle section: Lacquered in Stone in gloss finishing.

Front leg: Crystal Acrylic.

Back and central legs: Polished Brass finishing.

DIMENSIONS

W: 185 cm | 72,8"

D: 130 cm | 51,2"

H: 40 cm | 15,7"

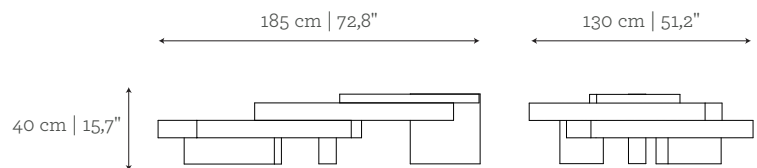
CUSTOM/BESPOKE

Suitable for custom size. Range between:

W 145 cm | 57" - 205 cm | 80,8"

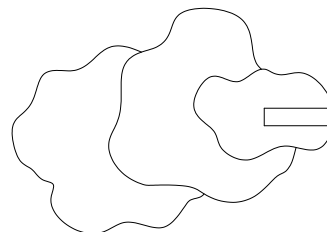
D 101 cm | 39,8" - 145 cm | 57"

H 40 cm | 15,8" - 60 cm | 21,7"



ENVIRONMENT

This product is made for living areas in interior spaces only. This product is not specified for bathrooms, spa's or humid environments. Not suitable for exteriors.



VOLUME

0,96 m³ | 33,90 ft³

WEIGHT

76 kg | 167,6 lbs

Packed (in wooden case)

1,63 m³ | 57,56 ft³

185 kg | 407,9 lbs

MATERIALS & FINISHES

Top & lower sections: American Walnut, Ebony, Amara Ebony or Olive Ash wood veneer with matt or gloss finishing.

Middle section: Lacquered in all RAL colours with matt or gloss finishing.

Front leg: Crystal Acrylic.

Back and central legs: Brass, Nickel or Copper plate in polished, brushed or antique finishing.

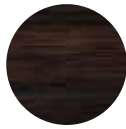
Top & lower sections:



AMERICAN
WALNUT



EBONY



AMARA
EBONY



OLIVE ASH

Middle Section:



CREAM
NCS S
1010 - Y20R



STONE
NCS S
2005 - Y30R



OLIVE GREEN
NCS S
6020 - Y10R



GREEN MOSS
RAL 7003



GREEN
RAL 6009



LAVENDER
NCS S
3010 - R



CHERRY
RAL 3005



CORAL
NCS S
4050 - Y90R



MIOSOTIS
NCS S
3010 - B70G



NIGHT JUNGLE
NCS S
8502 - G

Front leg:



CRYSTRAL ACRYLIC

Back & central legs:



BRASS
Polished



BRASS
Brushed



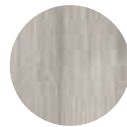
BRASS
Antique



NICKEL
Polished



NICKEL
Brushed



NICKEL
Antique



COPPER
Polished



COPPER
Brushed



COPPER
Antique