

# GINGER & JAGGER



## Bananas | Floor Lamp

Bananas brings to life the banana tree, with its elongated curved shape hosting hand-turned brass leaves. Emerging from a circular marble base, each leaf is connected to separate lighting tubes and features a uniquely chiseled texture, allowing the light to be both reflected and diffused along the surface, culminating in a stand out piece for any living space.

### AS PICTURED

#### MATERIALS & FINISHES

**Exterior of the Leaves:** Chiseled Brass.  
**Interior of the Leaves:** Polished Brass.  
**Tubes:** Polished Brass.  
**Base:** Carrara marble in polished finishing.

#### DIMENSIONS

W: 47 cm | 18,5"  
D: 58 cm | 22,8"  
H: 183 cm | 72"

#### BULBS & VOLTAGE

14 x G9 LED, 3W 2700K 200lm | 230V  
**EU & UK** - Bulbs, sockets, switch and plug included;  
**USA** - Wiring, bulbs, sockets and plug not included;  
**Non-EU requirements** - Please send an email to [info@gingerandjagger.com](mailto:info@gingerandjagger.com)

#### LIGHT CONTROL OPTIONS

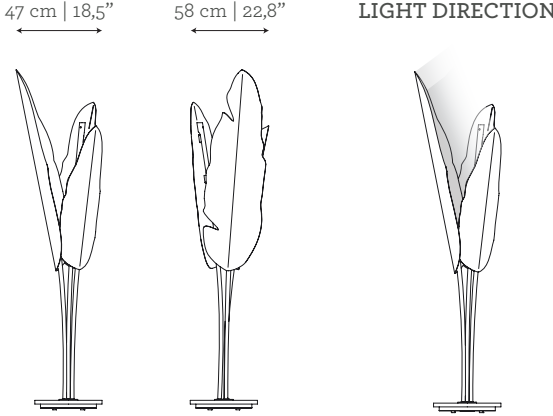
Supplied with standard switch.  
Dimmer switch available, upon request.  
DALI controller system available (upcharge over retail price), upon request.

#### CUSTOM/BESPOKE

This product is not suitable for customization.

#### ENVIRONMENT

This product is made for living areas in interior spaces only. This product is not specified for bathrooms, spa's or humid environments. Not suitable for exteriors.



#### VOLUME

0,50 m<sup>3</sup> | 17,66 ft<sup>3</sup>

#### WEIGHT

28 kg | 61,7 lbs

#### Packed (in wooden case)

0,56 m<sup>3</sup> | 19,78 ft<sup>3</sup>

70 kg | 154,3 lbs

## PRODUCT OPTIONS

Bananas | Floor Lamp

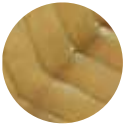
### MATERIALS & FINISHES

**Exterior of the Leaves:** Brass, Nickel or Copper plate in chiseled finishing.

**Interior of the Leaves & Tubes:** Brass, Nickel or Copper plate in polished, brushed or antique finishing.

**Base:** Carrara, Negro Marquina, Estremoz, Estremoz Rose or Guatemala Green marble in polished finishing, or Romano Travertine in natural finishing.

#### Exterior of the Leaves:



**BRASS**  
Chiseled



**NICKEL**  
Chiseled



**COPPER**  
Chiseled

#### Interior of the Leaves & Tubes:



**BRASS**  
Polished



**BRASS**  
Brushed



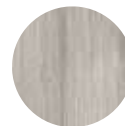
**BRASS**  
Antique



**NICKEL**  
Polished



**NICKEL**  
Brushed



**NICKEL**  
Antique



**COPPER**  
Polished

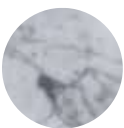


**COPPER**  
Brushed



**COPPER**  
Antique

#### Base:



**CARRARA**  
Polished



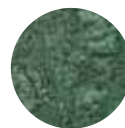
**NEGRO  
MARQUINA**  
Polished



**ESTREMOZ**  
Polished



**ESTREMOZ  
ROSE**  
Polished



**GUATEMALA  
GREEN**  
Polished



**ROMANO  
TRAVERTINE**  
Natural